



Rumbleseat Review

May 2009

Volume 24 Issue 5

P.O. Box 25
Wichita, KS 67201

May 2009

S	M	T	W	TH	F	S
					1	2
3	4	5	6	7	8	9
	11	12	13	14	15	16
17		19	20	21	22	
		26	27	28	29	
31						

June 2009

S	M	T	W	TH	F	S
	1	2		4	5	6
7	8	9	10	11	12	13
	15	1	17	18	19	20
21		23	24	25	26	27
28	29	30				

July 2009

S	M	T	W	TH	F	S
			1	2		
5	6	7	8	9	10	
12	13	14	15	16	17	18
19	20	21	22	23	24	
26		28	29	30	31	

May Refreshments



- ◆ David Moore
- ◆ Brenda Broadhead
- ◆ Brigitte Baggs
- ◆ Jane Hellar
- ◆ Jane Sensroth

Club Tours & Meeting Schedule

May 2009

- 18.....Early Bird Dinner Hogs Wild Pit Barbecue, 233 S. West St.....5:30 PM
- 18.....Club Meeting at Minisa Park, 704 W. 13th N.....7:00 PM
Program: Jim Broadhead presents, "how to rebuild a Distributor"
- 23-25.....Grand Lake/North East Oklahoma.....Havercrofts/ McLaughlin
- 30.....Rumble in Delano Pre-1965 Car Show.....John D. Stone

June 2009

- 3.....Newsletter Deadline.....editor@wichitaas.com.....
- 14.....All Wheels Day, Lake Afton.....Clark & Reeves
- 14-19.....High Country Tour... Model A Ford Club of CO.....Breckenridge, CO
www.coloradohighcountrytour.com
- 22.....Club Meeting at Minisa Park, 704 W. 13th N.....7:00 PM
- 22-26.....MARC National Meet.....Henry's A's Region.....Merrillville, IN

July 2009

- 4.....4th July Derby Parade & Picnic.....Hileman/McHenry/Sharp
- 11.....Automobilia Midnight Madness.....Giesen/ J.D. Stone

August 2009

- 28-31.....KC Truman Tour.....Beavers & Kibbes

Inside this issue:



Calendar	1
Meeting Minutes & Prez	2
Announcements	3
Future Tours & Events	4
Past Tour	5-6
Kottas' Model A Kaper	6-7
Tech Talk	8
Era Fashions	9
Future Model A Meets	10
Classifieds	11

Wichita A's Club Minutes

The 267th Wichita A's meeting was called to order by President **Ed Giesen** on April 27, 2009 with 101 members in attendance.

Guests/New Members present were **Keith Dudbeck** and **Barney Capps**.

Motion was moved to accept the minutes as printed in the Rumbleseat Review Newsletter by **Jim Broadhead**, second by **Darrell Ludlow**. Motion passed.

Treasurer **Jim Clark** gave balances with debits and credits.

Sunshine report by **Bonita Graham** gave updates on funerals and illness that effected club members.

Bowling team has ended season in **FIRST PLACE**. Congratulations!

Correspondence was a "Continuing Excellence Award", from MARC, presented to **Linda Kibbe** regarding the club newsletter.

Wichita Area Car Club Council had no report. There was no report for MARC and MAFCA.

Old Business – A report was given by **James Sharp** regarding the El-linwood Tour. 28 plus cars made the tour and everyone had a good time. The Garage Tour, according to **Jim Clark**, is on "hold" at this time.

New Business – Reviewed plans for McPherson Tour May 2, Memorial Weekend (Grand Lake/NE Okla-

homa) Tour May 23, 24 and 25, All Wheels Day/Lake Afton Show June 14, July 4 Derby Parade and Picnic, Automobilia Midnight Madness July 11 and Kansas City / Truman Tour August 28, 29, 30 and 31. For the Benton/Stearman Tour **Ruth Goodman** said plans are indefinite at this time after discussion with members.

At break time refreshments were served by **Grace Brooks, Barb Phye, Shirley Albers, Vinita Hawthorne** and **Nancy Slater**.

Program was presented by **Tom Ruggles** on "Tinkering with Model A Brakes" was well received.

Meeting then adjourned.

Lenette Kottas, Secretary

Editor's Note

I am happy to report the "Rumbleseat Review" has won the Model "A" Restorers Club Newsletter Award for Continuing Excellence for 2008. Do any of you remember who the Editor was when the newsletter was given its name? It was **Terry Grabendike**. The first "Rumbleseat Review" was published in April of 1985.

It seems that I have scheduling conflicts with the weekends I normally work on the newsletter. In July we are going to be out of town on my designated weekend for the newsletter. I have moved the deadline up to Friday, July 3rd for this rea-

Continue Editor's Note:

son. You guys have done an outstanding job of working with me and making the deadlines. Thank you for all your help!

We were sorry to miss the last Model "A" tour because of our miniature family reunion in Denver. Everyone said the **Sharps** and **Hilemans** did a fantastic job. **Richard** and I are really looking forward to traveling with you guys on Memorial Day weekend to Oklahoma.

Happy Model A'ing

Linda Kibbe, Editor

President's Note

Another tour season is upon us and we have now gotten some tours behind us.

I am particularly looking forward to all of the upcoming car shows this season. Our own, **Doug Schoemaker**, will be needing some help to make the Lake Afton All Wheels Day a success and there are many other shows in the area that can be a lot of fun as well as being a benefit to the community.

Be sure to check the Cruisin Calendar for area shows and get out and enjoy the great weather this spring (if it quits raining).

Ed Giesen, President

Announcements

June Birthdays

- 1 Kelly Huscher
- 3 Rex Kraus
- 3 Jack Shumard
- 4 Tonya Jordan
- 4 Glenda Sill
- 7 Lloyd Peters
- 10 Duane Gosch
- 11 John Weninger
- 12 David Anderson
- 13 Helen Louise Beaver
- 14 Jason Mayginnis
- 15 Mary Brashear
- 15 June Hall
- 18 Dutch Cheek
- 18 Alan Orr
- 19 Lenette Kottas
- 20 Trudee Harshfield
- 21 Tom Dixon
- 22 Sue Erikson
- 23 Diana Grube
- 24 Bob Johnson
- 24 Sheryl Wilson
- 28 Bob Bruce

Congratulations!

Congratulations to Charlie and Vinita Hawthorne on their 60th Wedding Anniversary on April 23rd. Hawthornes and their Model A's were featured in the May 2nd issue of the Wichita Eagle.

Deepest Sympathy

We offer our deepest sympathy to Ray and Trudee Harshfield for the loss of his brother, Chancey Lee.

Our deepest sympathy to Clara Bowman for the loss of her husband, Chuck Bowman. They were members of the Wichita A's several years ago.

Our prayers of sympathy to the family of Walter 'Ed' Hamlin, who passed away. He was our club member from Dodge City, KS.

New Member

John Edmondson

.....

.....

Roster Update

Dwayne E & Debbie Green

.....

.....

.....

For Sale

1928 Roadster
\$13,500.00
Stan Cox

.....

1930 Model A 1 T Truck—NO CAB & NO FRAME. For sale is the engine & transmission with PTO drive, complete front & rear end with springs, radiator, steering column, gauge cluster, running boards & splash aprons, head lights. Hood is good. Parting out parts.
Great Bend

.....

June Refreshments

Judi Sharp
Francis Grady
Nor Masters
Pat McHenry
Susan Stone

July Refreshments

Tony Pezzola (bringing sheet cakes)
No cookies needed this month for entire club

Newsletter Deadlines

Wednesday, June 3, 2009
Friday, July 3, 2009

Wedding Announcement and Wedding Reception Invitation

*Jane Semsroth
and
Steve McLaughlin
are pleased to announce their marriage
in a private ceremony*

*Please join them at the
Wedding Reception
Saturday, June 6, 2009
3:00 p.m.*

*Souders Historical Museum
(1 mile west of Cheney on McArthur Road)
followed by a
Barbeque by the Pool
at their home at 4:00 p.m.*

.....

.....

*Your presence is a cherished gift
they request no other.*

Future 'A' Tours and Events

Memorial Weekend Tour

May 23rd, 24th, 25th

We will leave from McDonalds at 47th St. South and Broadway at 7:00 AM. If you plan to have breakfast at McDonalds, be there early and ready to leave at 7:00 AM. We will visit; a Flint Hills Mustang Ranch, a Mansion, the Pensacola Hydro Dam, Darrell Starbirds Cars, Route 66 Packard's, the Cherokee Queen on Grand Lake, the Historical Coleman Theatre, and Route 66 Vintage Iron Motor Cycle.

Saturday night May 23rd, we will stay at Holiday Inn Express in Vinita, OK. Rate is \$76.48 + tax for a single or double. Call 1(918) 256-4900 for reservations.

Sunday night May 24th, we will stay at Microtel Inn & Suites in Miami, OK. Rate is \$49.00 + tax for single, \$59.00 + tax for a double. Call 1 (918) 540-3333 for reservations.

Twenty rooms have been reserved for The Wichita A's. You need to make your reservation as soon as possible. The cost of the tour is \$15.00 per club member and \$60.00 for guests.

For questions and or information contact;

Dale Havercroft or
Steve McLaughlin at



McLaughlin-Havercroft Tours
(a non-profit organization)

4th of July Derby Parade and Picnic

Plans for the fourth of July parade and picnic at our home are coming along nicely.

Tony Hock is excited to be cooking our BBQ.

Patty and I are delighted and looking forward to being with our friends! More Later.

Bo & Patty McHenry

Rumble in Delano Pre-1965 Car Show

Saturday, May 30th, 4-10pm

This is a fun car show started last year by a friend of mine with a shop in Delano. We will meet at Lawrence Dumont Stadium at 3:30 pm so we can enter and park together.

You can pre-register for \$15.00 at Bungalo 26 (611 W. Douglas) until May 20th. After May 20, registration will be \$20.00, or you can register the day of the show at the gate.

The car show is on West Douglas from McLean to Walnut. Door prizes and trophies will be awarded.

If anyone is interested in attending this car show with me, please contact **John D. Stone,** for details. (If there are enough participants, I will be sure to provide dinner!)

Kansas City & Truman Tour

August 28th, 29th, 30th, 31st.

We have made one change in our agenda. We are excited that we have added a tour to the KC Royals Kauffman Stadium. The tour to the Airline History Museum was canceled due to a time factor.

Motel Reservations: To guarantee your group discount rate you need to make your reservations no later than Thursday, July 30, 2009. We are staying at 2 separate Drury Inns. To receive your discount please mention the "**Wichita A's Car Club**", when making your reservations.

August 28-29 (2 nights) Drury Inn & Suites KC Stadium, 3830 Blue Ridge Cutoff, KC, MO

Non-Smoking King - \$74 plus tax

Non-Smoking Double - \$74 plus tax

(816) 923-3000 or (800-325-0720)

August 30 (1 night) Drury Inn Shawnee Mission/Merriam, 9009 West Shawnee Mission Parkway, Merriam, KS

Non-Smoking King \$69 – plus tax

Non-Smoking Double \$69 – plus tax

(913) 236-9200 or (800) 325-0720

Sign up at the meeting or *contact:*

Beavers –or **Kibbes**

Past Tours

Ellinwood Tour

Saturday, April 25th, we gathered in Maize to begin our trip to Hudson and Ellinwood, being led by **James and Judi Sharp** with a little moral support from the **Hilemans**. The day started beautifully with a mild temperature and a nice brisk wind. The wind stayed with us all day, but the temp soon dropped severely. A few of us were not equipped for the change, and we were COLD.



Photo taken by Kerry and Wanda Steffens.



Kerry Steffens trying to catch up with the group.

Photo taken by Gary & Donna Hileman

We still made it to our first stop in Hudson, Kansas. We were given a very interesting and informative tour of their nearly 100 year old flour mill. Most of us were not even aware that it ex-

isted. They make flour from locally grown wheat and ship it all over the country. Some of it is the highest grade flour made anywhere.



Photo taken by Gary Hileman



Charlie Hawthorne is overwhelmed with the amount of flour ready to be shipped.

Photo taken by Kerry & Wanda Steffens

We then moved down the street for a catered meal. This was as good a meal as you would find anywhere. It was great. At this point we had about 28 Models and a couple modern cars and about 68 people.

After our delicious meal, complete with live music, we moved on to Ellinwood, Kansas. There we checked out antique shops and the Ellinwood Underground.

Please See Ellinwood Tour Page 6

Ellinwood Tour

From Page 5



James & Judi Sharp organized this fun tour.

Photo taken by Gary & Donna Hileman

In the late 1800s, part of the downtown businesses were underground. Most have been filled in, but a small portion gives a great snapshot of life at that time. Very interesting. Everyone then started heading for home.



Eric Weninger wanting privacy for his bath.

Photo taken by Roger Graham

I know of no breakdowns other than a starter malfunction, which was solved with a push. It was about as trouble free a trip as you could hope for. **James and Judi Sharp** did a great job of planning and setting everything up. I think everyone had a good time and most importantly, plenty to eat. Thank You, **James and Judi.**

Gary Hileman

Kottas' Model A Kaper

Lawrence Kottas was born and raised in Wilson, Ks. When he was a teenager the family moved to nearby Ellsworth. This is where he met his future wife **Lenette** and took a job at the local dairy.

In December '56 **Lawrence** and **Lenette** were married. They soon realized that they needed a 2nd car and with budget constraints, faced by most young married couples, they chose to buy a 29 Model A Tudor from **Lenette's** uncle for \$30.



**Lawrence and Lenette with their 29 Tudor.
Owned since 1957**

They drove it home with no top and enroute there was a fire in the heater. It didn't run very well, so in the shop it went and it was discovered that there was about 1" of tar (gooey substance) in the bottom of the gas tank. With the help of a friend who was a chemist and also the local druggist they determined that denatured alcohol would cut the substance. **Lawrence** purchased a gallon for \$2 dollars and put it in the tank. Every time he would walk by the car **Lawrence** would jump on the running board to splash the alcohol around in the tank.

While waiting for the alcohol to dissolve all of the gooey stuff, **Lawrence** made a new wooden header board and put a metal top on the car. Also, **Lenette** and **Lawrence's** sister used an old couch cover to make a headliner, and they covered the seats with black vinyl.

Please see Kottas page 7

KOTTAS

From Page 6

Finally he drained the gooey substance from the tank, took a sediment bowl off a tractor and installed it under the tank. He would drive the car the 2 miles to work and have to drain the sediment bowl about every mile. This went on for some time and finally got to the point that it would go the 2 miles to work without draining.

The **Kottas'** were officially a 2 car family. When parts were required **Lawrence** would order them from Montgomery Ward or Sears and some the local parts store had. He used 10 weight oil in the winter and 30 weight in the summer. The Model A would always start no matter how cold it was. He drove the Model A to work at the dairy for 2 years and an additional 1 year to a job that he took in the brick factory which was 4 miles. The Model A served them well, then **Lawrence** took a job with the Power Company and the job was close enough to walk to work. The Model A was parked in the garage and there it sat until 1986.

Lawrence was a lineman for the Power Company, then a line foreman and finally promoted to line supervisor in 1982. This last promotion in 1982 required a move to Harper, Ks where the family still lives today.

In 1986, the **Kottas'** son, **Wesley**, had just graduated from college and didn't find a job right away. He wanted something to do so he started doing body work on the Tudor. He soon had it straightened and primed and ready for paint. A friend with painting experience came to the house and painted the car.

Lawrence then had **Don Lobner** rebuild the engine and purchased a LeBaron Bonney upholstery kit which he had **Tom Richardson** install.

Then he had the old two core radiator recored by B & R Radiator, reworked the brakes, installed an overdrive and new tires and it was ready to go.

In 1994 **Lawrence** retired from the Power Company after 35 years of service. Although **Lawrence** didn't think much about a hobby or club activity when he was restoring the Model A; that soon changed.

Harvey Romans, retired educator from Harper introduced the **Kottas** to the Wichita A's Club and the **Kottas** have been very active ever since. **Lenette** is serving as our current secretary.



29 Coupe, 2nd Model A restored by Lawrence.

Soon they bought a 29 Coupe from **Lawrence's** sister, after the death of her husband. The husband was a "car guy" and had owned the coupe since 1951 when he came back from the Service. **Lawrence** restored the coupe and then moved on to a 29 Roadster Pickup that he built up from parts. He was very disappointed with the interior space of the Pickup and soon sold it.



The Kottas with their 31 Town Sedan.

Then in, '07 they purchased a 31 S/W Town Sedan from **Jim Clark**. Now they have a Model A for each of their three children.

Their most prized possession is still the Tudor that they have owned for 52 years. RG

Tech Talk



Model A Spring Lubrication

There is a lubricant on the market for spring lubrication, a specialty product called Slip-Plate or Graphite Lubricant. It is a “paint on” type graphite lubricant that actually dries like paint. It was originally produced for the agriculture market but works quite well on Model A springs.

This “paint on” lubricant can be used very effectively if you have your chassis springs apart for cleaning or restoration. Apply this lubricant to the bottom side only of each leaf, except the main leaf. As the spring flexes from the vertical motion while driving down the road this is a long lasting lubricant that reduces friction and wear.

If the spring has grooves or gouges you should grind them out and also slightly chamfer the ends of the leaves. If you choose not to sandblast the leaves then it is wise to brush off all of the loose rust and apply a rust oxidizer like, Extend, before applying the Graphite Lubricant. Then you can apply regular paint to the assembled spring.

If you sandblast the leaves then you can paint the leaves in the normal manner before applying the Graphite Lube.

The product was introduced to the market many years ago as Slip-Plate in quart cans and was to be applied with a brush. Then, a few years ago, John Deere started to offer the product as Graphite Lubricate in 12 ounce spray cans. The spray cans sell for \$6.39 and are more convenient to use. A little bit goes a long ways. After doing one spring you will still have most of the can left. RG



John Deere, Graphite Lubricant in 12oz. spray can. Has many uses listed on the can: including garage door tracks, lawn mowers, car doors, tools & etc.



Bob Bruce found this quart can of Slip-Plate in his nearby True Value Hardware store. The graphics on the can have a very “old” look and it has a very unique top seal approved by the US Postal Service, 10-16-53. He showed it to his Model A buddies and the consensus was that he shouldn’t open it because it had the unique seal and over all vintage look. So, he went to the John Deere store on East Kellogg and bought the spray can.

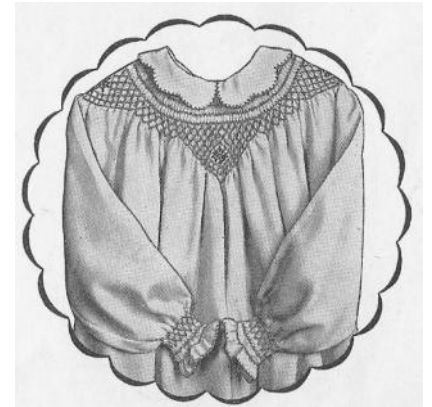
Era Fashions

Another New “Smocktop” Pattern No. 1640

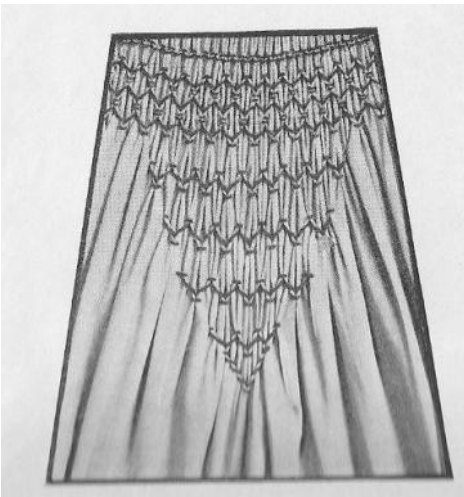
No 1640. McCall’s “Smocktop” Pattern, the New Combination Smocking and Dress Pattern. In 2 sizes—small (2, 4, and 6 years); large (8, 10 and 12 years). The transfer is shaped to fit neck and armholes, so that you do not need a dress pattern to cut by. All seams are straight except armholes, so that you simply cut 3 straight pieces of material for front, back and sleeves according to the chart in envelope. Pattern contains 1 transfer each for front, for back, for sleeves and for yoke foundation, collar, cuffs, etc. The details shown on page illustrate the delightful effects that may be obtained by filling in extra rows or by embroidering flowers in center of points. Full directions given in printed leaflet included in pattern. Price, 45 cents.



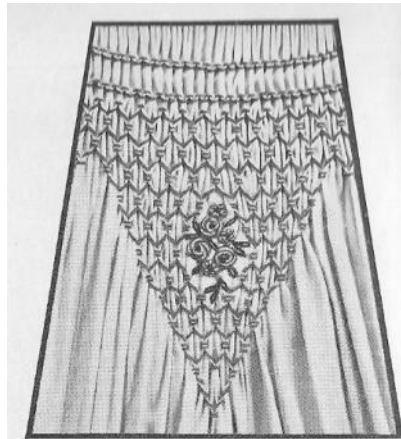
Girls from 4 to 10 years wear frocks smocked in the new way.



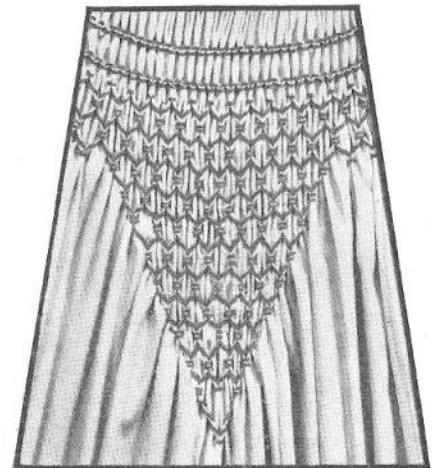
Detail showing smocked yoke and cuffs of dress in any of the sizes.



Showing the simple even rows without filling in the point.



Showing filling between rows and embroidered flower in center of point. Below the flower is omitted.



Detail shows how extra rows are worked between the single rows to make a solid effect.

The above Era Fashion article was copied from the Summer 1928 McCall Needlework magazine.

2008 - 2009 Swap Meet Schedule

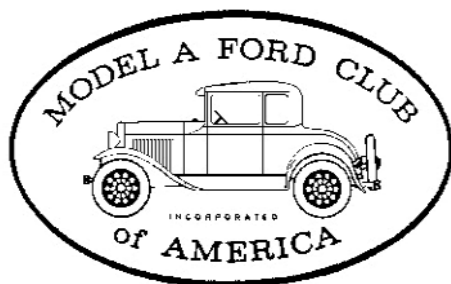
June 16-20, 2009.....	Petit Jean Show and Swap Meet, Petit Jean Mountain.....	Morrilton, AR
June 27-28, 2009.....	Swap Fremont - 24th Annual - Christensen Field	Fremont, NE
July 9-12, 2009.....	Iola Old Car Show & Swap Meet.....	Iola, WI
	www.iolaoldcarshow.com	
August 21-23, 2009.....	42nd Annual Ozark Swap Meet, Ozark Empire Fairgrounds.....	Springfield, MO
	www.ozarksantiqueautoclub.com	
September 19-20, 2009.....	Ararat Shrine Swap Meet at Wolds of Fun.....	Kansas City, KS
	http://www.araratshrine.com/swap/	

2009 Parade & Car Shows

May 30, 2009.....	Rumble in Delano Pre-1965 Car Show.....	John D. Stone
July 11, 2009.....	Automobilia Midnight Madness.....	Ed Giesen / John D. Stone
October 10, 2009.....	Maize Fall Festival Parade and Car Show	Maize, KS
	www.maizelionsclub.com	

2008 - 2011 Future Regional & National Model A Meets

June 14-18, 2009.....	Model A Ford Club of CO Regional Meet.....	Breckenridge, CO
June 22-26, 2009.....	MARC National Meet - Henry's A's Region.....	Merrillville, IN
December 3-6, 2009.....	MAFCA Annual Membership Meeting.....	Waukesha, WI
August 2-6, 2010.....	MAFCA International Meet.....	Vancouver, British Columbia,
December 8-11, 2010.....	MAFCA Annual Membership Meeting.....	Colorado Springs, CO
2010.....	MARC Membership Meet - Sycamore A Region.....	Terre Haute, IN
2010.....	Meadowlark A's Regional Meet.....	Omaha, NE
2011.....	Plain Ol' A's Regional Meet.....	Kansas City, KS



MAFCA
 250 S. Cypress St.
 La Habra, CA 90631 - 5515
 U.S. Membership Cost: \$40

The Wichita A's Model A Ford Club encourages members to join both National MARC and MAFCA Clubs.



MARC
 6721 Merriman
 Garden City, MI 48315
 U.S. Membership Cost: \$38

Tri County Insurance, Inc.
K. Verdou Parish
Representing J.C. Taylor for Antique Auto Insurance
407 N. Merchants St., P.O. Box 670
Belle Plaine, KS 67013
1-800-488-2408 Fax: 620-488-3834
Tricoag@atd.com
Serving Our Customers Since 1973

Jim's Model "A" Starter & Generator Repair

Specializing in 12 Volt Starters
3456 Bonn, Wichita, KS 67217
(316) 943-7033

Darrell's Tile

1225 E. Pawnee Wichita, KS 67211
(316) 265-8392

STAN LUDLOW

Marble, Granite, Limestone
Ceramic Tile, Mexican Tile
Professional Installation Since 1980
Come See Our Showroom

JEFF DEWEY ATTORNEY AT LAW

1020 N. MAIN, SUITE A DEWEY & LUND, L.L.P.
P.O. BOX 635 316-265-6600
WICHITA, KS 67201 FAX 316-265-0088
jdewey@deweylund.com TOLL FREE 800-680-6614

W
WALLACE W. WADE
SPECIALTY TIRES
530 Regal Row
Dallas, Texas 75247
(214) 688-0091
Fax (214) 634-8465
1-800-666-TYRE
www.wallacewade.com
wallacewade@earthlink.net

Vintage Tires
ANTIQUE & CLASSIC
CARS - TRUCKS
MILITARY - TRACTORS

WALLACE W. WADE
1 800 666 TYRE

SPECIALTY TIRE DISTRIBUTOR
"IF WE DON'T HAVE IT — WE'LL GET IT"



www.amfam.com

PAMELA KIRK AGENCY

9505 WEST CENTRAL SUITE 102
WICHITA, KS 67212



OFFICE: 316-729-9797
FAX: 316-729-9898



RAY HARSHFIELD

Office: (316) 942-1925
Fax: (316) 943-1311
Cell: (316) 305-1705
www.wichitagoldkey.com

GOLD KEY
REALTORS®

3535 W. 13th
Wichita, KS 67203



The Model "A" Medic

Specializing in ALL Your Parts, Service &
Restoration Needs for your Model "A" Ford

Eric Weninger Hm: (316) 685-2553
2045 S Bedford Rd Cell: (316) 619-1821
Wichita, KS 67207 email: eweninger@sbcglobal.net

Everything from tune-ups to ground up restorations

Clarence Howland

1911 Briarcliff
Emporia, Kansas 66801

BUY - SELL - TRADE
Antique Cars and Parts

Cell: (620) 341-3533
Home: (620) 342-0215



B&B Electric Motor Co.

Your One Stop Industrial Service Center

New • Repair • Rewind
Electric Motors • Pumps

Phone (316) 267-1238 • 1-800-499-1238
Fax (316) 267-0599 • Emergency (316) 641-0806
email: bbemc@msn.com • bbelectricmotor.com

332 Lulu
Wichita, KS 67211

Ed Giesen
Customer Service



Speedometer Repair

www.cushmanspeedometer.com
info@cushmanspeedometer.com

5704 N. Athenian Ave.
Wichita, KS 67204
(316) 648-2444
(316) 832-9090

Powder Coating Services

A Division Of

LORAC COMPANY

"FOR A DURABLE OVEN-CURED FINISH"

Motorcycle & Auto • Lawn Furniture • Hobbyist
Manufacturers • Aviation • Agriculture • Many Others

Sandblasting Facilities

316-263-2565 • 800-554-0144 • Fax 316-263-5181
MITCH HERRING 624 E. Harry
COATINGS MANAGER Wichita, KS 67211-4205

FB
FARM BUREAU FINANCIAL SERVICES
Insurance • Investments

James M. Sharp
Agent

316.788.5257
316.788.1836 fax
James.Sharp@fbfs.com
1721 East Osage, Ste. 100
Derby, KS 67037

Registered Representative/Securities & services offered through EquiTrust Marketing Services, LLC,*
5400 University Avenue, West Des Moines, IA 50266, 877260-2804, Member SIPC.
Farm Bureau Life Insurance Company* | Farm Bureau Mutual Insurance Company*
Western Agricultural Insurance Company* | *Affiliated, and companies of Farm Bureau Financial Services

PREFERRED HEARING AID CENTERS OF KANSAS

9415 E. Harry
Suite 206
Wichita, KS 67207

Phone: 316-618-1424

Email: Preferredhear@sbcglobal.net



Al Wilson

Hearing Instrument Specialist

SELECT-A-CAR

Donn Mason

Owner

Sales Representative

Dealer Sales
300 S. Winfield
Rock, KS 67211

Phone: 316-393-3269

Fax: 316-722-6238

Email: dpmason@selectacar.com

Edward Jones

MAKING SENSE OF INVESTING

Dwayne E. Green, AAMS®
Financial Advisor

9747 E 21st St North
Suite 127
Wichita, KS 67206
Bus. 316-522-1787 TF: 800-290-0754
Fax 316-630-0634 Hm. 316-634-1482
www.edwardjones.com



Andover Ace Hardware

630 N. Andover Rd. • P.O. Box 107
Andover, KS 67002
Phone: 316-733-0023 FAX: 316-733-2374
Email: a04487a@acehardware.com
Website: www.acehardware.com



Marc Wendt
Karolyn Wendt
Erich Wendt

HAYSVILLE SANDBLASTING

2075 Emmett Haysville, KS 67060

FULL SERVICE SANDBLASTING

In Shop Portable Phone: 522-6793 Commercial Residential

:LFKLWD \$ŦV 0RGHO \$)RUG &OXE
P.O. Box 25
Wichita, KS 67201

Address Service Requested

:LFKLWD \$ŦV 0RGHO \$)RUG &OXE

President, Ed Giesen

president@wichitaas.com.

Vice President, Jim Broadhead

vicepresident@wichitaas.com.

Secretary, Lenette Kottas

secretary@wichitaas.com.

Treasurer, Jim Clark

treasurer@wichitaas.com.

Tour Chairman, Dennis Ellerman

tourchair@wichitaas.com.

Swap Meet Chairman, Frank Chenoweth .

swapchair@wichitaas.com

Swap Meet Secretary John Stone

swapmeet@wichitaas.com.

Newsletter Editor, Linda Kibbe

editor@wichitaas.com.

Webmaster, Debbie Harvey

webmaster@wichitaas.com.

Review is the official publica-
chapter of the Model A Ford Club of America and the
members informed of past, present and future events, activi-
ties, and club news. In addition, this newsletter includes
articles and other information to aid in the restoration
and enjoyment of the Model A Ford automobile.

This publication is mailed to members, prospec-
tive members and editors of similar publications prior to
monthly meetings. Meetings are usually the fourth
Monday of the month. Members may publish antique
car related ads only for free of charge which includes
items wanted, items for sale, or items for trade. We in-
vite members to submit articles containing technical
Model A information and other interesting tidbits for
publication in this newsletter. Items to be published
must be submitted to the newsletter editor by deadline
are \$25.00 (new members) and \$20.00 (renewals), per
year (October to September30). MAFCA dues are
\$40.00 per year and MARC dues are \$38.00 per year.
An advertisement in this newsletter is \$15.00 per year.