



Rumbleseat Review

March 2009

Volume 24 Issue 3

P.O. Box 25
Wichita, KS 67201

March 2009

S	M	T	W	TH	F	S
1	2	3	4	5	6	7
8	9	10	11	12	13	14
15	16	17	18	19		21
22		24	25	26	27	
29	30	31				

April 2009

S	M	T	W	TH	F	S
			1	2	3	4
	6	7	8	9		11
	13	14	15	16	17	18
19	20	21	22	23	24	
26		28	29	30		

May 2009

S	M	T	W	TH	F	S
					1	
3	4	5	6	7	8	9
	11	12	13	14	15	16
17		19	20	21	22	23
24		26	27	28	29	30
31						

March Refreshments



- ♦ Ruth Goodman
- ♦ Sue Johnson
- ♦ Trudee Harshfield
- ♦ Vicki Hildibrand
- ♦ Linda Boivin

Club Tours & Meeting Schedule

March 2009

- 7.....Newsletter Deadline.....editor@wichitaas.com.....
- 23.....Early Bird Dinner at Bishops Family Dining.....5:30 PM
- 23.....Club Meeting at Minisa Park, 704 W. 13th N.....7:00 PM
Program: "Fahrenheit Fright" troubleshooting the A cooling system
- 26-28.....MARC Membership Meet..... www.modelarestorers.orgMarietta, GA
- 28.....Garage Tour.....Clark, Hilger, Cushenbery

April 2009

- 11.....Newsletter Deadline.....editor@wichitaas.com.....
- 25.....Ellinwood Tour.....Sharp & Hileman
- 27.....Early Bird Dinner at Golden Corral, 616 S. Ridge Rd Circle.....5:30 PM
- 27.....Club Meeting at Minisa Park, 704 W. 13th N.....7:00 PM
- 29.....Newsletter Deadline.....editor@wichitaas.com.....

May 2009

- 2.....McPherson Tour, Car Show & Restoration Center.....Mayginnis
- 18.....Club Meeting at Minisa Park, 704 W. 13th N.....7:00 PM

June 2009

- 7.....Tanganyika Wildlife Park, Goddard, KS.....Phyes
- 14.....All Wheels Day, Lake Afton.....Clark & Reeves
- 14-19.....High Country Tour... Model A Ford Club of CO.....Breckenridge, CO
www.coloradohighcountrytour.com
- 22-26.....MARC National Meet.....Henry's A's Region.....Merrillville, IN

Inside this issue:



Calendar	1
Meeting Minutes & Prez	2
Future Tours & Events	3
Tech Talk	4
Creative Dealers	5
Robertson's Model A	6
Bunco Party	7
Announcements	8
Era Fashions—Regional Ads	9
Future Model A Meets	10
Classifieds	11

Wichita A's Club Minutes

The 265th Wichita A's meeting was called to order by President **Ed Giesen** on February 23rd, 2009 with 126 members in attendance.

It was moved by **Eric Baggs**, second by **John Masters**, to accept the January 2009 minutes as printed in the Rumbleseat Review Newsletter. Motion passed.

New members are **Bob** and **Sue Robare**.

Treasurer **Jim Clark** gave a report on club financial activities. There were no final figures on Swap Meet amounts.

Sunshine report by **Bonita Graham** gave updates on **Charlie Hawthorne**, **Opal Glasgow** and **Richard** and **Linda Kibbe** family.

Correspondence was read.

Old business: There were no reports from Wichita Area Car Club Council, MARC or MAFCA. It was stated the Swap Meet was a success. It was reported the Post Swap Meet Party had 52 in attendance. We had a good time with plenty of food and playing the Bunco game.

New business: A film was shown on High Country Tour coming June 14-19, 2009 with a special anniversary

celebration being planned. Announced March 1st is deadline to add info to the Roseters list as then being printed. President **Ed Giesen** shared the news and 45 year award from MAFA with the club.

Break session was taken with **Virginia Courtright**, **Claudia Ellerman**, **Glenda Sill**, **Esther Stoss**, **Becky Straub** and **Dawna Ruggles** providing refreshments.

Dennis Ellerman led the Tour Planning Program.

Meeting then adjourned.

Minutes recorded by

Lenette Kottas, Secretary

Editor's Note

Please make a note the Ararat Shrine Swap Meet will be held at the Worlds of Fun in Kansas City, MO.

The touring schedule will be starting very soon. Richard and I are taking a short vacation during the first weekend of May. I have moved up the May newsletter deadline to April 29, 2009.

Remember the club meeting is one week earlier in May. It is scheduled on the 18th because Memorial Day falls on our normal schedule.

Linda Kibbe, Editor

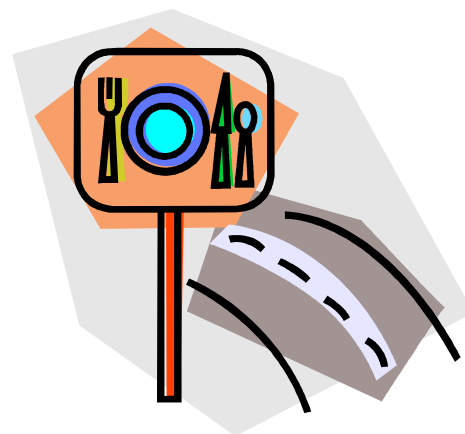
President's Note

We are heading into a new touring season and I am looking forward to getting the A's out on the road soon.

I would like to thank our Swap Meet committee for all of their hard work as well as all the members who helped to make the swap meet a success.

If you have any tour ideas please contact our tour chairman, Dennis Ellerman, so he can get it on the calendar. With all the uncertainty that we face in this world it will be nice to enjoy our hobby and think of a simpler time.

Ed Giesen, President



What we like to do the best!

Future 'A' Tours and Events

Garage Tour

March 28th

We will meet at McDonalds at Ridge and 21st N. at 8:30 AM. We will need a head count. Thank You

Call Jim Clark at before March 23.

Memorial Weekend Tour

May 23rd, 24th, 25th

We will leave from McDonalds at 47th St. South and Broadway at 7:00 AM. If you plan to have breakfast at McDonalds, be there early and ready to leave at 7:00 AM. We will visit; a Flint Hills Mustang Ranch, a Mansion, the Pensacola Hydro Damm, Darrell Starbirds Cars, Route 66 Packard's, the Cherokee Queen on Grand Lake, the Historical Coleman Theatre, and Route 66 Vintage Iron Motor Cycle.

Saturday night May 23rd, we will stay at Holiday Inn Express in Vinita, OK. Rate is \$76.48 + tax for a single or double. Call 1(918) 256-4900 for reservations.

Sunday night May 24th, we will stay at Microtel Inn & Suites in Miami, OK. Rate is \$49.00 + tax for single, \$59.00 + tax for a double. Call 1 (918) 540-3333 for reservations.

Twenty rooms have been reserved for The Wichita A's. You need to make your reservation as soon as possible. The cost of the tour is \$15.00 per club member and \$60.00 for guests.

For questions and or information contact;

Dale Havercroft

Steve McLaughlin at

Dead line to sign up for this tour is May 9th.



McLaughlin-Havercroft Tours
(a non-profit organization)

Ellinwood Tour

April 25th

Come and join us for a spring tour on April 25th. We will be traveling to Hudson, Kansas to visit the Stafford County Flour Mills, where flour has been milled for over 100 years. After visiting Hudson we will eat lunch at the Heartland Cafe in Hudson. Then it is a short drive north to Ellinwood, Kansas where we will tour the underground tunnels located under some of the early business establishments in Ellinwood.

Cost... \$5 per club member

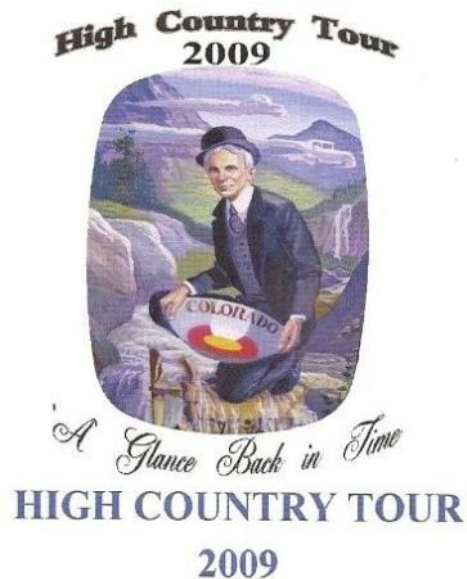
\$15 for non club members

We will leave from the Kwik Shop in Maize (53rd & Maize Rd) at 7:00 am.

Deadline to sign up is April 10.

James & Judi Sharp and Gary & Donna Hileman, tour hosts.

For information call Sharp's at



The High Country Tour is being held at Breckenridge, CO on June 14-19, 2009. Call me for the registration form or you can download the form off the internet:

www.coloradohighcountrytour.com

Linda Kibbe

Tech Talk



Steering Gear Lubricant

When the Model A was new the steering box was equipped with an Alemite fitting to accept a common grease gun. **Big mistake!**

The owners manual clearly states that grease should not be used in the box but, who reads the manual anyway? Maybe a few Ford mechanics. The Alemite fitting was a signal for it to be filled with a grease gun and that's what a lot of people did.

As the steering gear was used, it didn't take long before the worm and sector gears formed a path in the grease and left no lubrication at all, on these components. That left metal to metal contact of the teeth on the gears, and resulted in premature wear.

It wasn't until September of 29 that Ford finally came out with a service bulletin advising mechanics, not to use grease in the steering gear. Even then the picture of the steering gear still pictured the grease fitting. Finally in October of 29, after 2.5 million Model A's had been produced, Ford issued a service bulletin advising that the steering gear lubricator fitting, was being replaced with a pipe plug.

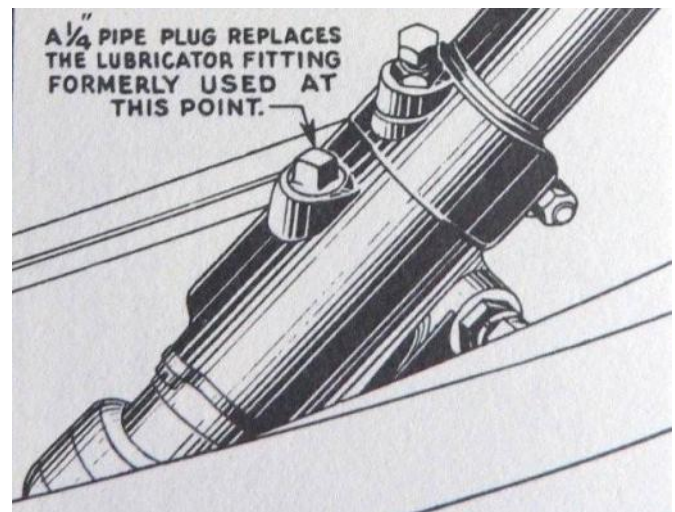
By then a lot of damage was already done and unknowing service stations and mechanics would remove the plug and put in a grease fitting, probably for ease of filling.

Our club member, **Wayne Orr** has rebuilt hundreds of steering gears and he still finds this problem today. One recent box that he rebuilt was almost full of grease but the worm gear had been dry and actually rusted.

The correct lubricant when the car was new was 600W gear lube which is equivalent to EP140 gear lube today. This is the same lube that is used in the transmission and differential. Most Model A parts

suppliers today sell a product labeled 600W. It is actually EP140 blended with 25% STP. The STP adds a "sticky" component to cut down on leakage. Some notable mechanics actually use pure STP in all of the Model A gear boxes which is probably ok.
RG

Service Bulletin October 1929



To eliminate the possibility of mechanics putting grease instead of gear lubricant in the steering gear, the lubricator fitting has been replaced with a pipe plug.

Never put grease in the steering gear. Complaints of hard steering can invariably be traced to that source. Use gear lubricant only in the steering gear—the same lubricant that is used in the axle and transmission.

Creative Dealers

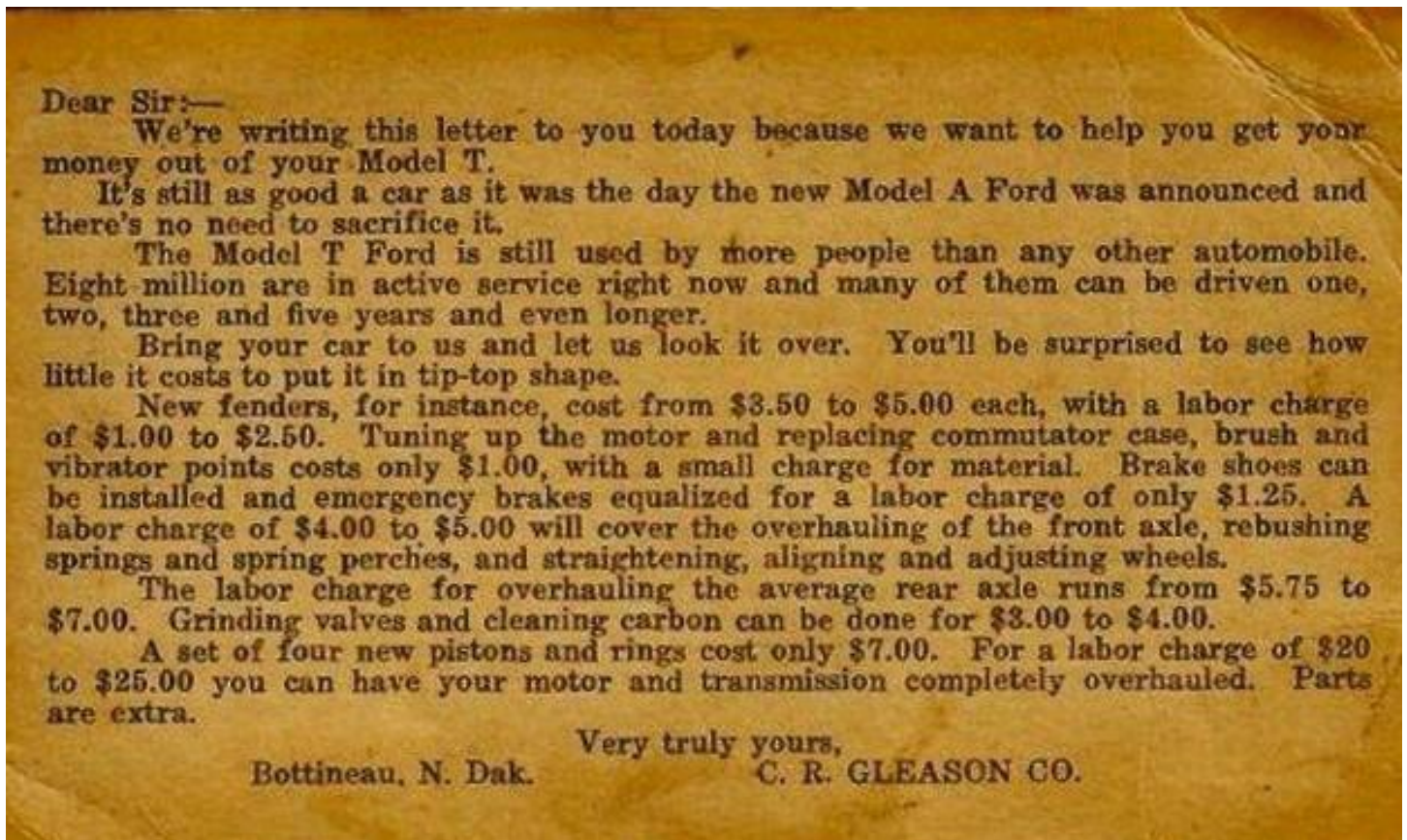
In May 1927, after manufacturing 15 million Model T Fords, Edsel Ford convinced his father, Henry that the appeal of the Model T was starting to diminish and that a new Model was required, if they were to maintain their leadership in the industry. They actually ceased production and left their dealers "high and dry" for 7 months while they retooled to

build the Model A. Some dealers went out of business and others switched to other makes in order to keep the doors open. When the Model A was introduced in Dec. 27, the company almost immediately amassed orders for 500,000 cars and it took many more months to start delivering in quantity.

POST CARD FRONT & BACK

The C.R. Gleason company of Bottineau, ND used this post card approach to supplement their business. Ford Motor Co. lost \$72 million dollars in 1928 but turned out a \$92 million profit in 1929 so you would have thought that this dealer would have been prosperous by June 29 when he mailed out these post cards. Probably, he was just being creative to increase his business in this small community. RG

Thanks to **Wayne Orr** for sending this artifact.



Jim & Bea's Model A Adventures

Jim and Bea Robertson are natives of Jamestown, North Dakota. Jim didn't own a Model A while in school but soon after graduating high school, his younger brother talked his dad into purchasing two tree row specials from a local farmer. Dad always regretted not purchasing a running coupe for \$300 instead of the two derelicts for \$75 each. But, with the help of their Scoutmaster, who owned a garage and parts from JC Whitney they got it running enough for trips around the neighborhood.

Jim was off to college at North Dakota State. This endeavor was interrupted about half way for a tour of the Army. Upon return from overseas with a few dollars in his pocket he purchased a 1931 jalopy pickup which had been made from a converted Tudor with a farm made wood box.

With the help of local Model A enthusiasts and a machine shop in Grand Forks who rebuilt the engine and welded up the freeze cracks in the block, **Jim** rebuilt the pickup.

Jim and Bea were married in 1973, while he was still in college.

His senior project was to design and build a tow bar. With his Mechanical Engineering Degree in hand **Jim** and **Bea** moved to Cedar Rapids, Iowa for his first professional job. Of course they towed the Model A with the project tow bar.

The Cedar Rapids, Hawk 'A' Model A club sponsored a National Meet in 1977 which was **Jim's** first observation of judging the beautiful blue ribbon cars. The **Robertsons** and their first born son actually were pictured in the Model A News, while attending that event.

Jim's next job took them back to Bismarck, ND with the Model A in tow of course. With the help of a very active club, **Jim** was able to buy a closed cab pickup body complete with the correct box. Then he was able to convert the jalopy to an authentic pickup. With a new family, funds were tight but it became apparent that parades would be more fun in an open car, so they focused on finding a roadster pickup. **Jim** collected most of the parts but was unable to find a roadster pickup body.

In the mean time, club members encouraged **Jim** to try a Model T so he put together a 1925 roadster pickup out of parts. He had also collected all of the parts to build a Model A roadster pickup except the cab. He had almost given up on finding a cab when a club member called him at work one day and told him about a 1928 roadster pickup cab at a garage sale down the street. A fellow had moved to Texas and left his wife to "clean out the garage". **Jim** didn't dicker over the \$200 price tag as he already had the rest of the parts to assemble a complete pickup.

Then a job change took the family to Buchanan, Michigan. At this point it was necessary to sell the 31 closed pickup to make a down payment on the next house. They still had the 25 Model T pickup and converted it to a touring

car to better accommodate the expanding family. After a few months in Michigan they retrieved the Model A roadster pickup parts (see picture) from storage in ND and assembled it unrestored.



Roadster Pickup parts transported from. Bismarck, ND to: Buchanan, MI. Note: frame attached to the top of station wagon



28 Roadster Pickup assembled from parts gathered up in North Dakota

Then came another job change that took the family to, Burlington, Iowa. This time they sold the 1925 Model T touring to make the next house down payment. The moving company loaded the cars in a van this time. While living in Burlington **Jim** restored the Model A Roadster pickup with the help of club members and friends. Just as they were leaving Burlington for the next job a friend talked **Jim** into buying a 1924 Model T jalopy which he still owns. He has some regrets about this purchase since it turned out to be the most worn out vehicle he has ever seen.

Jim & Bea From Page 6

The next job change took the family to Carol Stream, Illinois where they were welcomed into the Fox Valley Antique Car Club. They were very active in this small club and thoroughly enjoyed the activities. Living near Chicago the tours weren't long but none the less enjoyable.



Jim & Bea Robertson

In 2006 the family decided on yet another job change that would take them to Wichita, where **Jim & Bea** both landed employment in the engineering department at Case New Holland.

The Fox Valley Club actually notified the Wichita A's that the **Robertsons** were on the way and would be potential club members. We determined that their new address was in the Reece Farms addition near Goddard and **Dale Havercroft** who also lives in that addition made a house call to welcome them to Wichita and the club.

They joined right away but weren't active with all the tasks that go with settling in a brand new home. Then **Jim** got some help in getting an out of state title on the Model A transferred to Kansas and he also had **John Stone** rebuild the engine.

Now things seem to have settled down and the **Robertsons** can enjoy their new home and Model A club, they hope that their jobs don't move them again. RG

Richard Kibbe and Bob Phye having a little discussion over who gets the last piece of cake.

Bunco Party

The party, last month, attracted 56 people and a wide variety of covered dishes and many desserts. After the meal, tables were set up for 13 bunco tables.

By the time we concluded the games, 48, \$1 coins were awarded to individual bunco winners.

Grand prizes were awarded as follows:

Mens high score: **Jim Robertson**, \$25 Harbor Freight gift certificate

Womens high: **Mary Hilger**, \$25 Applebees gift certificate

Mens low score: **Steve Boivin**, \$25 Harbor Freight gift certificate

Womens low: **Brenda Broadhead**, \$25 Applebees gift certificate

Mens most punches: unknown \$25 Harbor Freight gift certificate

Womens most: **Bridgett Baggs** \$25 Applebees gift certificate



Sue Cushenbery, Jeanie & Ron Cole enjoying their meal before playing Bunco.



Announcements

April Birthdays

3	Terry Kalp
4	Robert Anderson
6	Ray Harshfield
7	Ray Hoffmans
10	Jerry Sharp
12	Fred Hilger
14	Louanna Cushenbery
14	Kim Grabendike
15	Gary Hileman
17	Brenda Broadhead
21	Mary Eastin
21	Rita Hoffmans
21	Carolyn Valerius
22	Jeff Dewey
23	Roberta Witte
24	Jim Reeves
26	Bert Courtright
27	John Masters
28	Dean Goodman
28	Judy Garrett
28	Bob Gordon
28	Charlie Guinty

Newsletter Deadlines

April 11, 2009 (for April)
April 29, 2009 (for May)

New Baby on Board

Richard and Linda Kibbe are the proud grandparents of Paige Elaine Schuster born on Feb. 19th. Her proud parents are Darren and Amanda Schuster.

April Refreshments

Grace Brooks
Barb Phye
Shirley Albers
Vinita Hawthorne
Nancy Slater

May Refreshments

David Moore
Brenda Broadhead
Brigitte Baggs
Jane Hellar
Jane Sensroth

Club Rosters

Club Rosters have been mailed. PLEASE check your information and let me know if there are any corrections. I used a different program and want to correct any items I typed wrong.

My Thanks!! to Linda Kibbe for providing the ads for the newsletter. Roster updates will be in the newsletter each month so you can keep your roster up-to-date. There will be extra rosters at the March meeting.

IF you move, let me know or the newsletter may not follow you to your new address. Also, if you would like a list of Club e-mail addresses, let me know.

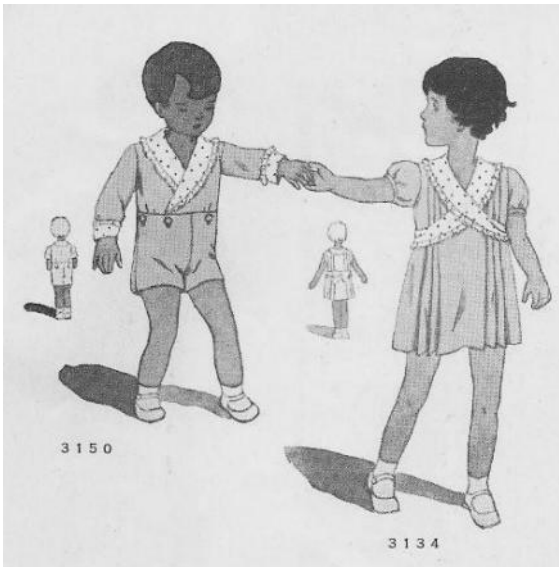
Susan Stone,

Wichita A's Bowling Team



Left to Right: Kim Giesen, Bonita Graham, Doris Jean Ludlow, Tama Fairleigh and Linda Kibbe

Era Fashions



SMALL BROTHER SUIT

3150: The fabrics in little brother's suit are the same as his sister's dress. The collar and cuffs with ruffled edges are white linen embroidered in dots that match the color of the chambray suit. Four buttons in front and two in back secure the pants to blouse. Designed for 21 to 23 1/2 (sizes 2 to 5).

SMALL SISTER FROCK

3134: To show they are of the same clan, the fabrics in sister's dress match those in brother's suit. The cross-over fichu is white linen with dots to match the chambray. The frock has tiny puff sleeves, groups plaits and separate one-piece French panties. Designed for 20 to 24 (sizes 1 to 6).

Copied from the April 1930 issue of the Delineator magazine.

Classified Ads From Regional Model A Club Newsletters

The Starter - February 2009 - Salt Creek Chapter

1929 Ford Model A Tudor Sedan, fresh paint job, new upholstery, Runs Great. Asking \$12,000, Lee Bahlmann, Stickney, IL Home #: Cell #

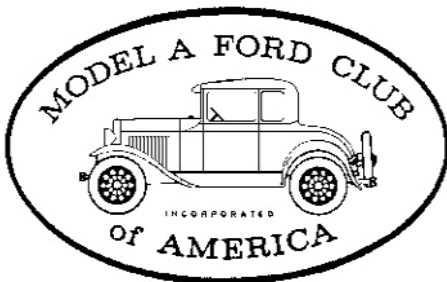
1929 Brigg's Fordor, restored \$17,500 Jordon Beller Home #: (..... Cell #:

Meadowlark Model A Ford Club News - February, 2009 - Omaha, NE

1928 Roadster - older restoration, running car, 1929 Sport Coupe - older restoration, running car. For pictures And information, contact Don Graves,

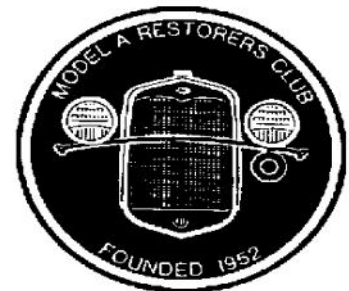
The Rumble Sheet - February 2009 - Tulsa Model A Club

1928 Roadster Pickup - Looks & Runs Great. - Make Reasonable Offer - Elmer Battenfield



MAFCA
250 S. Cypress St.
La Habra, CA 90631 - 5515
U.S. Membership Cost: \$40

The Wichita A's Model A Ford Club encourages members to join both National MARC and MAFCA Clubs.



MARC
6721 Merriman
Garden City, MI 48315
U.S. Membership Cost: \$38

2008 - 2009 Swap Meet Schedule

March 19-21, 2009.....	Chickasha Pre-War Swap Meet.....	Chickasha, OK
	www.pwsm.com	
April 4-5, 2009.....	Ararat Shrine Swap Meet at Worlds of Fun.....	Kansas City, KS
	http://www.araratshrine.com/swap/	
April 30-May 3, 2009.....	37th Annual Pate Swap Meet, Texas Motor Speedway.....	Fort Worth, TX
	www.pateswapmeet.com	
May 2, 2009.....	Lawrence Antique Auto Swap meet, Douglas Fairgrounds	Lawrence, KS
May 7-9, 2009.....	Chickasha Spring Swap Meet, Fairgrounds	Chickasha, OK
	www.chickashaautoswapmeet.com	
June 16-20, 2009.....	Petit Jean Show and Swap Meet, Petit Jean Mountain.....	Morrilton, AR
June 27-28, 2009.....	Swap Fremont - 24th Annual - Christensen Field	Fremont, NE
July 9-12, 2009.....	Iola Old Car Show & Swap Meet.....	Iola, WI
	www.iolaoldcarshow.com	
August 21-23, 2009.....	42nd Annual Ozark Swap Meet, Ozark Empire Fairgrounds.	Springfield, MO
	www.ozarksantiqueautoclub.com	
September 19-20, 2009.....	Ararat Shrine Swap Meet at Wolds of Fun.....	Kansas City, KS
	http://www.araratshrine.com/swap/	

2009 Parade & Car Shows

October 10, 2009.....	Maize Fall Festival Parade and Car Show	Maize, KS
	www.maizelionsclub.com	

2008 - 2011 Future Regional & National Model A Meets

March 26-28, 2009.....	MARC Membership Meet - Gold Mine Region.....	Marietta, GA
June 14-18, 2009.....	Model A Ford Club of CO Regional Meet.....	Breckenridge, CO
June 22-26, 2009.....	MARC National Meet - Henry's A's Region.....	Merrillville, IN
December 3-6, 2009.....	MAFCA Annual Membership Meeting.....	Waukesha, WI
August 2-6, 2010.....	MAFCA International Meet.....	Vancouver, British Columbia,
December 8-11, 2010.....	MAFCA Annual Membership Meeting.....	Colorado Springs, CO
2010.....	MARC Membership Meet - Sycamore A Region.....	Terre Haute, IN
2010.....	Meadowlark A's Regional Meet.....	Omaha, NE
2011.....	Plain Ol' A's Regional Meet.....	Kansas City, KS

Tri County Insurance, Inc.
 K. Verdou Parish
 Representing J.C. Taylor for Antique Auto Insurance
 407 N. Merchants St., P.O. Box 670
 Belle Plaine, KS 67013
 1-800-488-2408 Fax: 620-488-3834
 Tricoagy@aol.com
 "Serving Our Customers Since 1973"

B & B Electric Motor Co.
 Your One Stop Industrial Service Center
 New • Repair • Rewind
 Electric Motors • Pumps
 Phone (316) 267-1238 • 1-800 499-1238
 Fax (316) 267-0599 • Emergency (316) 641-0806
 email: bbemc@msn.com • bbelectricmotor.com
 332 Lulu Ed Giesen
 Wichita, KS 67211 Customer Service

Darrell's Tile
 1225 E. Pawnee Wichita, KS 67211
 (316) 265-8392
STAN LUDLOW
 Marble, Granite, Limestone
 Ceramic Tile, Mexican Tile
 Professional Installation Since 1980
 Come See Our Showroom

JEFF DEWEY
 ATTORNEY AT LAW
 1020 N. MAIN, SUITE A DEWEY & LUND, L.L.P.
 P.O. BOX 635 316-265-6600
 WICHITA, KS 67201 FAX 316-265-0088
 jdewey@deweylund.com TOLL FREE 800-680-6614

W
WALLACE W. WADE
 SPECIALTY TIRES
 530 Regal Row
 Dallas, Texas 75247
 (214) 688-0091
 Fax (214) 634-8465
 1-800-666-TYRE
 www.wallacewade.com
 wallacewade@earthlink.net
WALLACE W. WADE
 1 800 666 TYRE
 SPECIALTY TIRE DISTRIBUTOR
 "IF WE DON'T HAVE IT — WE'LL GET IT"

AMERICAN FAMILY INSURANCE
 AUTO HOME BUSINESS HEALTH LIFE
 www.amfam.com
PAMELA KIRK AGENCY
 9505 WEST CENTRAL SUITE 102
 WICHITA, KS 67212

 OFFICE: 316-729-9797
 FAX: 316-729-9898

The Model "A" Medic
 Specializing in ALL Your Parts, Service &
 Restoration Needs for your Model "A" Ford
 Eric Weninger Hm: (316) 685-2553
 2045 S Bedford Rd Cell: (316) 619-1821
 Wichita, KS 67207 email: eweninger@sbcglobal.net
 Everything from tune-ups to ground up restorations

SUNFLOWER SWAP MEET
KANSAS COLISEUM
WICHITA, KS
FEBRUARY 5-6, 2010

Clarence Howland
 1911 Briarcliff
 Emporia, Kansas 66801
 BUY - SELL - TRADE
 Antique Cars and Parts


 Cell: (620) 341-3533
 Home: (620) 342-0215

Jim's Model "A"
Starter & Generator Repair
 Specializing in 12 Volt Starters
 3456 Bonn, Wichita, KS 67217
 (316) 943-7033


Cushman Corporation
Speedometer Repair
 www.cushmanspeedometer.com
 info@cushmanspeedometer.com
 5704 N. Athenian Ave.
 Wichita, KS 67204
 (316) 648-2444
 (316) 832-9090

Powder Coating Services
 A Division Of
LORAC COMPANY
 "FOR A DURABLE OVEN-CURED FINISH"
 Motorcycle & Auto • Lawn Furniture • Hobbyist
 Manufacturers • Aviation • Agriculture • Many Others
Sandblasting Facilities
 316-263-2565 • 800-554-0144 • Fax 316-263-5181
 MITCH HERRING 624 E. Harry
 COATINGS MANAGER Wichita, KS 67211-4205

FARM BUREAU FINANCIAL SERVICES
 Insurance • Investments
 316.788.5257
 316.788.1836 fax
 James.Sharp@fbfs.com
James M. Sharp
 Agent 1721 East Osage, Ste. 100
 Derby, KS 67037
 Registered Representative/Securities & services offered through EquiTrust Marketing Services, LLC,*
 5400 University Avenue, West Des Moines, IA 50266, 877280.2904, Member SIPC.
 Farm Bureau Life Insurance Company* | Farm Bureau Mutual Insurance Company*
 Western Agricultural Insurance Company* | *Affiliated, and companies of Farm Bureau Financial Services

PREFERRED HEARING AID CENTERS OF KANSAS
 9415 E. Harry
 Suite 206
 Wichita, KS 67207
 Phone: 316-618-1424
 Email: Preferredhear@sbcglobal.net

Al Wilson
 Hearing Instrument Specialist

SELECT-A-CAR
Donn Mason
 Owner
 Sales Representative:
 Dealer Sales
 300 S. Wichita
 Rock, KS 67151
 Phone: 316-393-3269
 Fax: 316-722-6238
 Email: dpmason@selectacar.com


RAY HARSHFIELD
 Realtor Associate
 Phone: (316) 942-1925
 Fax: (316) 943-1311
 Res.: (316) 262-2958
GOLD KEY REALTORS®
 3535 W. 13th
 Wichita, KS 67203

Andover Ace Hardware
 630 N. Andover Rd. • P.O. Box 107
 Andover, KS 67002
 Phone: 316-733-0023 FAX: 316-733-2374
 Email: a04487a@acehardware.com
 Website: www.acehardware.com
Marc Wendt
Karolyn Wendt
Erich Wendt

HAYSVILLE SANDBLASTING
 2075 Emmett Haysville, KS 67060
 FULL SERVICE SANDBLASTING
 In Shop Phone: 522-6793 Commercial
 Portable Residential

Wichita A's Model A Ford Club
P.O. Box 25
Wichita, KS 67201



PRSR STD
US POSTAGE PAID
WICHITA KS
PERMIT NO. 169

Address Service Requested

Wichita A's Model A Ford Club Contacts

President, Ed Giesen

president@wichitaas.com.

Vice President, Jim Broadhead

vicepresident@wichitaas.com.

Secretary, Lenette Kottas

secretary@wichitaas.com.

Treasurer, Jim Clark

treasurer@wichitaas.com.

Tour Chairman, Dennis Ellerman

tourchair@wichitaas.com.

Swap Meet Chairman, Frank Chenoweth .

swapchair@wichitaas.com

Swap Meet Secretary, John Stone

swapmeet@wichitaas.com.

Newsletter Editor, Linda Kibbe

editor@wichitaas.com.

Webmaster, Debbie Harvey

webmaster@wichitaas.com

The Rumbleseat Review is the official publication of the Wichita A's Model A Ford Club, Inc, a local chapter of the Model A Ford Club of America and the Model A Restorers Club. It's purpose is to keep members informed of past, present and future events, activities, and club news. In addition, this newsletter includes articles and other information to aid in the restoration and enjoyment of the Model A Ford automobile.

This publication is mailed to members, prospective members and editors of similar publications prior to monthly meetings. Meetings are usually the fourth Monday of the month. Members may publish antique car related ads only for free of charge which includes items wanted, items for sale, or items for trade. We invite members to submit articles containing technical Model A information and other interesting tidbits for publication in this newsletter. Items to be published must be submitted to the newsletter editor by deadline shown in the calendar. Wichita A's membership dues are \$25.00 (new members) and \$20.00 (renewals), per year (October to September30). MAFCA dues are \$40.00 per year and MARC dues are \$38.00 per year. An advertisement in this newsletter is \$15.00 per year.