



Rumbleseat Review

April 2009

Volume 24 Issue 4

P.O. Box 25
Wichita, KS 67201

April 2009

S	M	T	W	TH	F	S
			1	2	3	4
5	6	7	8	9	10	11
12	13	14	15	16	17	18
19	20	21	22	23	24	
26		28		30		

May 2009

S	M	T	W	TH	F	S
					1	
3	4	5	6	7	8	9
	11	12	13	14	15	16
17		19	20	21	22	
		26	27	28	29	30
31						

June 2009

S	M	T	W	TH	F	S
	1	2		4	5	6
7	8	9	10	11	12	13
	15	16	17	18	19	20
21		23	24	25	26	27
28	29	30				

April Refreshments



- ◆ Grace Brooks
- ◆ Barb Phye
- ◆ Shirley Albers
- ◆ Vinita Hawthorne
- ◆ Nancy Slater

Inside this issue:



Calendar	1
Meeting Minutes & Prez	2
Tours Schd & MAFCA News	3
Tour & Event Information	4-6
Refreshment Information	6
Don Arnold Model A Bio's	7
Model A Motor Home	8
Announcements	9
Tech Talk	10
Era Fashions—Regional Ads	11
Future Model A Meets	12
Classified Ads	13

Club Tours & Meeting Schedule

April 2009

- 25.....Ellinwood Tour.....Sharp & Hileman
- 27.....Early Bird Dinner at Golden Corral, 616 S. Ridge Rd Circle.....5:30 PM
- 27.....Club Meeting at Minisa Park, 704 W. 13th N.....7:00 PM
Program: Tinkering with Model A Brakes by Tom Ruggles
- 29.....**Newsletter Deadline**.....editor@wichitaas.com.....

May 2009

- 2.....McPherson Tour, Car Show & Restoration Center.....Mayginnes
- 18.....Early Bird Dinner Hogs Wild Pit Barbecue, 233 S. West St.....5:30 PM
- 18.....Club Meeting at Minisa Park, 704 W. 13th N.....7:00 PM
- 23-25.....Grand Lake/North East Oklahoma.....Havercrofts/ McLaughlin

June 2009

- 3.....Newsletter Deadline.....editor@wichitaas.com.....
- 14.....All Wheels Day, Lake Afton.....Clark & Reeves
- 14-19.....High Country Tour... Model A Ford Club of CO.....Breckenridge, CO
www.coloradohighcountrytour.com
- 22.....Club Meeting at Minisa Park, 704 W. 13th N.....7:00 PM
- 22-26.....MARC National Meet.....Henry's A's Region.....Merrillville, IN

July 2009

- 4.....4th July Derby Parade & Picnic.....Hileman/McHenry/Sharp
- 11.....Automobilia Midnight Madness.....Giesen/ J.D. Stone

August 2009

- 28-31.....KC Truman Tour.....Beavers & Kibbes

Wichita A's Club Minutes

The 266th Wichita A's meeting was called to order by President **Ed Giesen** on March 23, 2009 with 90 members in attendance.

No new members announced.

A motion was moved to accept the minutes as printed in the Rumbleseat Review Newsletter by **Bob Johnson**, second by **Gay Hileman**. Motion passed.

Treasurer **Jim Clark** gave the financial report for February. His reported the Swap Meet status of income, expenses and profit. It is probable all bills have been turned in by now.

Sunshine report by **Bonita Graham** said that **Doris Jean Ludlow's** sister-in-laws funeral was today.

Bonita mentioned the Wichita A's ladies bowling team is still in first place.

No correspondence was read.

Old business: President **Ed Giesen** presented a jacket to **Gary Hileman** for being Past President. A certificate was given to Frank Chenoweth as **Swap Meet Chairman**. **John** and **Susan Stone** were given a certificate as Swap Meet Secretary. **Ed Giesen** will deliver the Swap Meet assistant certificate to **Eric Baggs**.

Wichita Area Car Club Council had no report. **Kerry** and **Wanda Steffens** gave no report on MARC and MAFCA.

New Business: **Jim Clark** reviewed details about the Garage Tour for March 28th 2009. **James Sharp** talked about the Ellinwood Tour for April 25th 2009. There was no report about the McPherson

Tour for May 2nd 2009. **Dale Havercroft** gave information on the Memorial Weekend Tour, May 23-25, 2009. **Ruth Goodman** presented the plans on the Stearman and Stuff Tour for May 16th.

President **Ed Giesen** and **Richard Kibbe** reminded members about the dead lines regarding our newsletter.

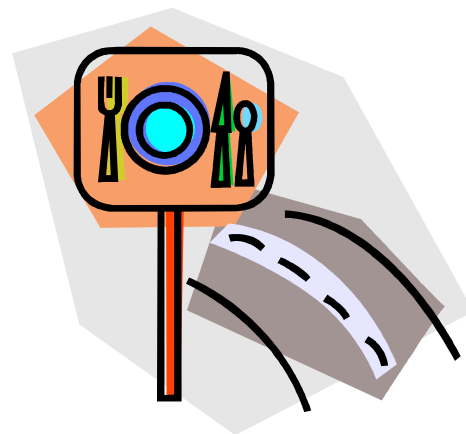
Tom Ruggles let members know he has brake band linings available. Members should contact him if they wish to purchase the linings.

Refreshments served by **Ruth Goodman, Sue Johnson, Trudy Harshfield, Vicki Hildibrand** and **Linda Boivin**.

After break the program on Fahrenheit Fright – trouble shooting situations and parts repairs was presented by **Ed Giesen** using the club's new projector.

Meeting then adjourned.

Lenette Kottas, Secretary



What we like to do the best!

President's Note

I am glad to see plans for a lot of upcoming tours and it looks like we will have a very active summer of events. I guess **Jim Clark** didn't pay his dues to Mother Nature so he had to cancel the garage tour but I've heard that they have made up and the weather will be great for the rescheduled event. If you believe that then we need to talk about the bridge that I have for sale.

Anyway, I digress, keep touring and enjoy the hobby.

Ed Giesen, President

Editor's Note

PLEASE NOTE: Due to print shop deadlines, bulk mailing and my vacation schedule the newsletter deadlines has been changed.

The new deadline for the May newsletter is April 29, 2009. The June newsletter deadline is June 3, 2009.

Thank you for all the help you can give me in making these deadlines.

We also need to remember the change in the May schedule for the club meeting. Due to Memorial Day we will have the club meeting on Monday the 18th of May.

It is never too early to list details about your upcoming tour in the newsletter. This gives everyone the opportunity to make plans ahead of time so they can attend your tour. Remember, not everyone receives email so on a short notice via email not everyone is receiving notice of your tour. Tour information should be listed in at least two issues of our newsletter prior to the tour.

Linda Kibbe, Editor

Wichita A's 2009 Tour Schedule

April 25	Hudson Mills/ Ellinwood Underground	Sharps/ Hilemans
May 2	McPherson College Annual Car Show	Mayginnes
May 23-25	Grand Lake/ NE OK.	Havercrofts/McLaughlin
June 14	All Wheels Day – Lake Afton	Clark/ Reeves
July 4	Derby Parade & Picnic	Hileman/McHenry/Sharp
July 11	Automobilia Midnight Madness	Giesen/Stone
August 28-31	KC Truman Tour	Kibbes/Beavers
September 26	Marion Antique	Ellerman/Straub/Hileman
October 4	All Ford Day @ Camp Hiawatha	Clark/Reeves
October 24-25	Mens Tour	Ruggles/Cushman
December 5	Ladies Christmas Brunch	Graham/ Praeger
December 12	Club Christmas Party	McLaughlin/Guinty/Kottas

Special Notes Concerning the Wichita A Tour Schedule

1. The Tanganyika Wildlife tour, originally scheduled for June 7th, has been canceled for that date. There will be an update later covering the tour.
2. Due to a scheduling conflict with another Wichita A's tour, the Wichita A's Scottish Festival tour has been canceled.

MAFCA Updates

March 25 - I'm sorry to report that MAFCA President **Brian Freestone** submitted his resignation as President and from the Board for personal reasons Sunday night March 22. On Monday evening, March 23, the Board elected a new President, **Les Andrews**. On Tuesday evening, March 24, I was sworn into office by Past President **Bruce Davis** at the Auburn A's club meeting.

To dismiss any further rumors, Vice President **Arlyn Bieber** has decided to remain on the Board and fulfill his duties as Vice President.

I want to ensure our membership that the MAFCA Board is sound and working together with one goal in mind, and that is to serve the membership. We are all excited about the future of MAFCA, which is the membership we serve.

As soon as the Board has filled the vacancy created by Brian's resignation, the membership will be notified.

Les Andrews
2009 MAFCA President

FOLLOW UP:

March 28 - **Dave Jones**, Mountain View, California, has been appointed by the Board of Directors to fill the vacancy on the Board created by **Brian Freestone's** resignation. **Dave** will be Membership Director and will fill the vacated term of 2009/2010 after he is sworn into office at the April Board meeting.

Future 'A' Tours and Events

May 2 McPherson Auto. Restoration Tour and Car Show

We will meet at the McDonalds at 53rd & Meridian. If you plan to grab a bite to eat please be early and ready to leave at 7:30 AM. This is a nice drive. We will be visiting the Antique Automotive Restoration facility with a tour and enjoy a great show on the College Campus. The facility is the only college in the country to offer a four-year degree in Automotive Restoration.

Cost...\$5 per club member to cover meal ticket, \$5 from club for registration. So for only \$5 you can enjoy a great day with some good events taking place as follows: 8am-Noon Registration. (Be sure to tell them you're a member of our club to get the discount if you don't pre-register.) They have agreed to extend our discount to the day of the show.

Between 10am-2pm you will have the opportunity to see the Model T Build Demonstration, Internship Presentation-within the Melhorn Science Bldg., tours of

Templeton Hall Restoration Facility and have lunch with a choice between hamburger or Bratwurst, chips, and dessert. Raffle prizes begin at 2:30 PM and the Awards ceremony starts at 3:00 pm.

For questions and or information, please contact:
Jason Mayginnes cell,

Please Note:

Due to the space issue of this newsletter I will have plenty of Pre-Registration forms at the meeting. You can also copy off the registration form from a previous email I had sent you covering this tour.

*Thanks,
Linda Kibbe, Editor*

Memorial Weekend Tour

May 23rd, 24th, 25th

We will leave from McDonalds at 47th St. South and Broadway at 7:00 AM. If you plan to have breakfast at McDonalds, be there early and ready to leave at 7:00 AM. We will visit; a Flint Hills Mustang Ranch, a Mansion, the Pensacola Hydro Dam, Darrell Starbirds Cars, Route 66 Packard's, the Cherokee Queen on Grand Lake, the Historical Coleman Theatre, and Route 66 Vintage Iron Motor Cycle.

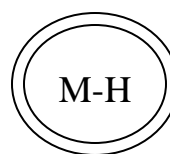
Saturday night May 23rd, we will stay at Holiday Inn Express in Vinita, OK. Rate is \$76.48 + tax for a single or double. Call 1(918) 256-4900 for reservations. Sunday night May 24th, we will stay at Microtel Inn & Suites in Miami, OK. Rate is \$49.00 + tax for single, \$59.00 + tax for a double. Call 1 (918) 540-3333 for reservations.

Twenty rooms have been reserved for The Wichita A's. You need to make your reservation as soon as possible. The cost of the tour is \$15.00 per club member and \$60.00 for guests.

For questions and or information contact;

Dale Havercroft or
Steve McLaughlin at

Dead line to sign up for this tour is May 9th.



McLaughlin-Havercroft Tours
(a non-profit organization)

2009 Gamblers For Life! - Car, Truck & Motorcycle Show - 5-3-09

I work at Precision Pattern Inc. and I'm a member of the Wichita A's. PPI is sponsoring a car show on May 3, 2009 to benefit The American Cancer Society. The car show will be located in the PPI employee parking lot at 1643 S. Maize Road, south of Kellogg on Maize Road. The \$20 participant fee will be fully tax deductible since PPI will pay for the total event. The A's would have their

own area with plenty of shade. I plan to take my Roadster and **Wayne Orr** will have one of his cars. There will be lots of prizes, awards and free refreshments and an all day Barbeque.

If you have any questions please call **Gary Cox** either home or cell phone

Kansas City & Truman Tour

August 28th, 29th, 30th, 31st.

The Beavers and Kibbes have run their tour to Kansas City which is happening on a 4 day weekend, August 28-31, 2009. **PLEASE NOTE:** this the weekend **BEFORE** Labor Day Weekend. Labor Day weekend is September 5-7, 2009.

Saturday, you will be visiting the Truman Presidential Museum & Library, Truman Home, 1859 Jail, and Marshal's Home & Museum. You can also do a little antique shopping and see "Clinton's Soda Fountain". Sunday, we will be given a tour of the National World War I Museum. You can also explore the 217foot tower built in 1926. Later that afternoon we are visiting the Airline History Museum. Monday we are stopping at **Dean Weller's "Grandpa's Garage"** in DeSota, KS.

Motel Reservations: To guarantee your group discount rate you need to make your reservations no later than Thursday, July 30, 2009. We are staying in 2 separate Drury Inns. To receive your discount please mention the **"Wichita A's Car Club"**, when making your reservations.

August 28-29 (2 nights) Drury Inn & Suites Kansas City Stadium, 3830 Blue Ridge Cutoff, KC, MO

Non-Smoking King - \$74 plus tax

Non-Smoking Double - \$74 plus tax

(816) 923-3000 or (800-325-0720)

August 30 (1 night) Drury Inn Shawnee Mission/Merriam, 9009 West Shawnee Mission Parkway, Merriam, KS

Non-Smoking King \$69 – plus tax

Non-Smoking Double \$69 – plus tax

(913) 236-9200 or (800) 325-0720

For further questions please contact:

Beavers – or **Kibbes**



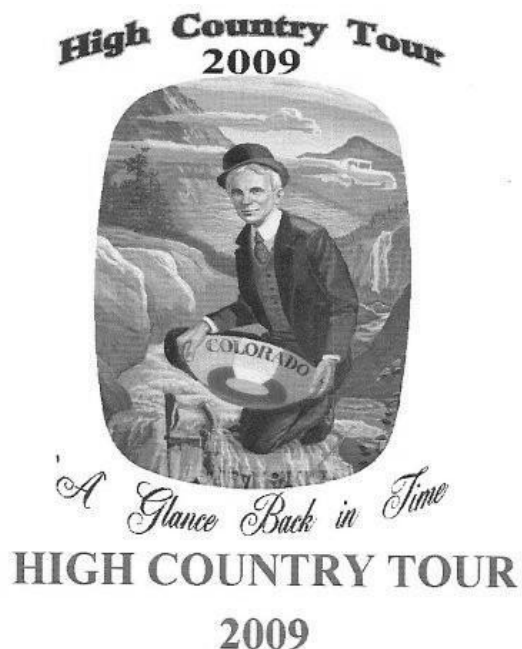
*Jane Semsroth
and
Steve McLaughlin
are pleased to announce their marriage
in a private ceremony*

*Please join them at the
Wedding Reception
Saturday, June 6, 2009
3:00 p.m.
Souders Historical Museum
(1 mile west of Cheney on McArthur Road)
followed by a
Barbeque by the Pool
at their home at 4:00 p.m.*

.....

.....

*Your presence is a cherished gift
they request no other.*



High Country Tour - June 14-19, 2009

The High Country Tour is being held at Breckenridge, CO. Call me for the registration form or you can download the form off the internet:

www.coloradohighcountrytour.com

Linda Kibbe

4th of July Derby Parade and Picnic

Plans for the fourth of July parade and picnic at our home are coming along nicely. Tony Hock is excited to be cooking our BBQ. Patty and I are delighted and looking forward to being with our friends! More Later. **Bo & Patty McHenry**

Refreshment Committees

REFRESHMENTS AT CLUB MEETINGS

Thanks to all of you who so graciously signed up earlier to serve refreshment sometime during 2009. Your help is sincerely appreciated.

The signup sheet for cookies for 2009 is completely filled!! Thanks to all of you for your contribution.

A REMINDER TO ALL

If you are new or might not be familiar with the way this is organized, here are a few pointers.

1. Furnish 5 dozen cookies
2. If you plan to serve a drink other than coffee or water, you will need to bring it in a container as well as ice if needed.
3. If you cannot be at the meeting THIS IS NOT A PROBLEM. Just send your things and we have plenty of people who will be glad to help with serving.

THE CLUB FURNISHES THE FOLLOWING:

1. Coffee pot/coffee (I will start the coffee before the meetings)
2. Cups (both hot and cold)
3. Creamer/sugars
4. Napkins
5. Plates
6. Cleanup supplies

IF THERE IS ANYTHING YOU WILL NEED FOR YOUR MONTH TO SERVE THAT IS NOT ON THE ABOVE LIST, PLEASE LET ME KNOW AND I WILL BRING IT. WE HAVE MANY SUPPLIES THAT THE CLUB PROVIDES THAT I DON'T ALWAYS BRING TO THE MEETINGS.

If you cannot serve on the month you are signed up for, please call me and I will find you a replacement. Thanks to all of you who help to make this a great club!

Ruth Anne Praeger

Don Arnold's Model A Biography

Pictures by: Kat Arnold, official photographer for the Army Reserve.

Don Was born and raised in the small town of Longton, which is 86 miles southeast of Wichita in Elk County. **Don's** father worked as the City Water Superintendent. The city depended on a 28 Model A Ford Fire Truck for fire fighting duties. One day a fire call came in from Moline which is 15 miles west of Longton. The Moline Merchantile Store was on fire and was too large for the local fire department to contain. The Model A Fire truck in Longton, wouldn't start so they ended up towing it to Moline. When they arrived it was too late as the store was totally destroyed. As a result the maintenance of the fire truck was assigned to **Don's** dad, who delegated the task in part to his son. **Don** was to start and run the truck on a regular basis to make sure it was fire ready. Even after his father left the city and opened his own repair shop the Fire Truck maintenance fell on **Don**, up until the time he graduated from high school in 1952. **Don** then left Longton and eventually joined the Army so he lost track of the Fire Truck and probably really didn't expect to ever see it again.

In 1965, shortly after the Model A Club was formed in Wichita, charter member, **Jim Starkey** went to Longton and bought the Model A Fire truck for \$200. **Jim** was a musician and active Shriner so the truck was used as a parade vehicle, many times with **Jim's** band riding and playing on the truck.

Jim passed away in the late nineties and his widow, **Sally** donated the truck to the Kansas Fire Fighters Museum.

Back to **Don**, when it came time for him to retire from the Army Reserve in 1993 he began to look for an un-restored Model A for a retirement project. He soon purchased a 30 Fordor Sedan from **Gene Bosserman**. When he came to the Swap Meet looking for parts, **Keith Cramer** signed him up for the club. He had never owned a Model A before so this full body off restoration was a challenge. When it came time for paint he purchased a spray gun from Big Lots and practiced on the underside of the fenders. Actually it was finished in a reasonable length of time and he and **Kat** have attended many tours and parades.

Next, **Don** decided that he would like to have a Model A pickup. **Darrell Ludlow** had a 29 sport coupe body for sale that was extremely rusty in the rear section, but after a lot of head scratching and measuring, **Don** decided that he could convert the body to a pickup so he purchased it. He ordered a new pickup bed and went to work on the body. The rear panel was made from plywood and then covered with fiberglass. The upper part of the panel is covered with top material which is integral with the top. The pickup was finished in the year 2000, a year later than it would have been if the **Arnold's** residence had not been destroyed by the 1999 tornado in Haysville.

In 2001 the Kansas Fire Fighters Museum asked the Wichita A's to assist with the restoration of the Model A Fire

Truck. **Don Arnold** heard that the Fire Truck came from Longton so he definitely wanted to help with the restoration project. When he showed up for the work session there was no doubt that this was the truck that he maintained as a teenager and hadn't seen for 50 years. It still had the Longton Fire Dept. tag topper on the headlight bar. **Don** accepted the task of working the fenders and spent considerable time on them, which was sort of a labor of love considering the origin of the truck. With work sessions every Thursday evening the truck was finished in only 6 months and turned out really nice. So, there you have it, **Don's** Model A experiences spanning 60 years. RG



Don, standing between his 29 pickup and the 28 fire truck .



Don takes the wheel, over 50 years after he left Longton.



Don's 29 pickup fabricated from a sport coupe body.

Model A Motor Home

This 1931 Model A Motor Home appeared on eBay last month. It was being offered by a seller in Piggott, Arkansas (Yes, there is such a place in extreme north east Arkansas). The seller seems to think that it was possibly a limited production factory unit since the metal body is riveted together. It features a kerosene heater, propane oven and 2 burner cook top stove, sink with hand pump, gas lights and many storage cupboards, and a dining booth that converts to a bed.

The seller was asking for an opening bid of \$2500. No bids were posted and it was removed from the auction before the closing so it's hard to say if it sold or for how much.



This motor home would fit right in parked in front of your home.



Engine Compartment. Seller says it "should run". ??????



*Dining booth, stove and sink with hand pump.
Nice little spot for the in-laws*



Picture yourself in the driver seat.



1951 California Tag. (Should be easy to restore.)

Announcements

May Birthdays

1	Feryl Giesen
2	Sue Johnson
6	Teresa Mayginnnes
9	Mary Hilger
10	Kathleen Paxton
11	Lu Andrews
11	Karen Yardley
12	Eric Weninger
13	Garry Brashear
15	Marla Frazier
15	Scott Guinty
16	Doug Schoemaker
16	Kat Arnold
18	Sondra Boyd
18	Cherie Slater
18	Don Waller
21	Kim Slater
22	Judy Hill
23	Marvin Stoss
24	Jim Robertson
25	Bill Garrett
26	Steve Huscher
26	Ron Little
26	Hazel Roberts
27	Shirley Albers
28	Karolyn Wendt
29	Peg Mahoney

Wichita A's Bowling Team

Our team officially finished in 1st place this year. Team members are Bonita Graham, Doris Jean Ludlow, Tama Fairleigh, Linda Kibbe and Kim Giesen.

Roster Update

Richard & Denise Ashford

.....

.....

.....

Sue Erikson

.....

.....

.....

Galen Voth

.....

.....

.....

New Member

Richard P Sanchez

.....

.....

.....

'30 Tudor

Deepest Sympathy

Our sympathy to Richard & Denise Ashford at the death of her Grandmother.

Also, sympathy to Darrell & Doris Jean Ludlow at the death of her sister-in-law.

Newsletter Deadlines

Wednesday, April 29, 2009 (for May)

Wednesday, June 3, 2009

For Sale

1930 Model A 1 T truck engine & transmission with PTO drive. Complete front end and rear end with springs, radiator, steering column, gauge cluster, running boards, splash aprons and head lights. Hood - good. Parting out parts. No cab or frame. Great Bend, KS

May Refreshments

David Moore

Brenda Broadhead

Brigitte Baggs

Jane Hellar

Jane Sensroth

June Refreshments

Judi Sharp

Francis Grady

Nor Masters

Pat McHenry

Susan Stone

Model A Medic

Need Parts?? Remember the Model "A" Medic delivers to the monthly meetings free of charge.

Call and place your parts order today. The Model "A" Medic Your only local source for Model A Parts!! Call today!!!

..... or

Do We Now Have to Worry About Wood Bores?

Taylor Merrill from LaGrange, GA has an interesting Model A story: I was wondering if you have ever heard of it. The wood piece that goes over the windshield that I purchased, from Steve's in North Carolina, started having tiny pin holes in the surface along with wood powder dust on the cowl. Although I had remembered something about wood borers I did Google the information and it

appears that the wood can have eggs and larvae inside that may take months or years to mature. When they mature the adult chews it way out of the wood and makes these pin holes. If I don't hurry and finish the Panel Delivery they'll eat up the wood before I get done! I have "painted" the wood with Sevan. Hope this will solve the problem.

Tech Talk

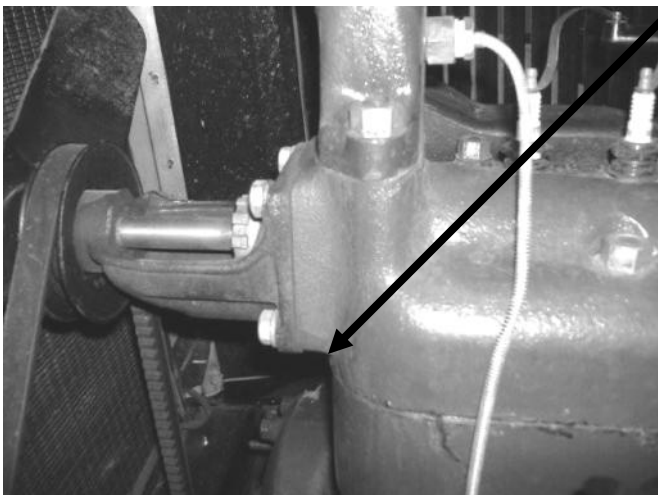


Combine Engines

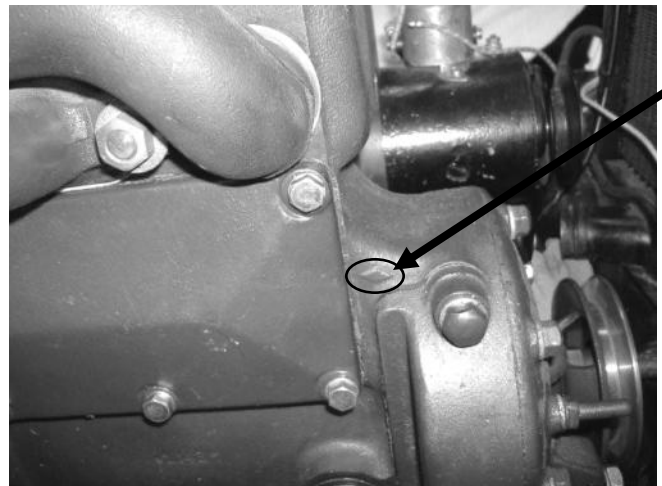
Since Kansas is in the middle of the Wheat Belt, we have an extra resource in finding Model A replacement engines. Baldwin combines used Model T engines and sometime after the introduction of the Model A, they switched to Model A engines. If you find a Model A combine engine, most of which are still on the combine stand you have a pretty good chance that it will be standard bore in the cylinders. They were used in harvest and were left unused for the rest of the year so they really weren't used that much and therefore weren't subject to a lot of wear. The thing to beware of on combine engines is the possibility of a cracked block. If the engine overheated because the radiator was blocked with straw, ran wide open or other reasons of neglect they were prone to have cracks from the two middle valves over to the adjacent cylinder. **John Stone** has found several of these over the years so it is something to keep in mind if you purchase a combine engine. If possible buy it on a contingency plan: where you can return it if cracked.

Baldwin continued to use Model A engines for several years after the Model A production ceased in

1931. These late production engines are commonly called "diamond blocks". The block had a small diamond shape embossed on the block above the side timing gear cover. They also had a diamond embossed on the left hand side of the head under the water pump protrusion. All combine Model A heads had a Ford Script embossed on the head slightly to the rear of the distributor. As far as we know, original Model A vehicles never came with the script head. The two desirable features of the, diamond blocks, are replaceable valve seats on the exhaust valves and all of these engines came with a "B" cam. The "B" cam was a higher performance cam designed for the "B" engine that was introduced in 1932. Another feature on the diamond blocks is not so obvious. If you remove the flywheel you will find a date embossed on the inside of the flywheel housing. Mine is dated 11-20-39. **Otto Praeger** retrieved this engine from a hedgerow near Great Bend. A lot of Baldwin combines were produced in the thirties so a lot of the available combine engines are, diamond blocks. RG



Diamond is embossed on the head under the water pump protrusion on the left side of the engine.



Diamond is embossed just above the timing gear cover on the right side of the engine.

Era Fashions

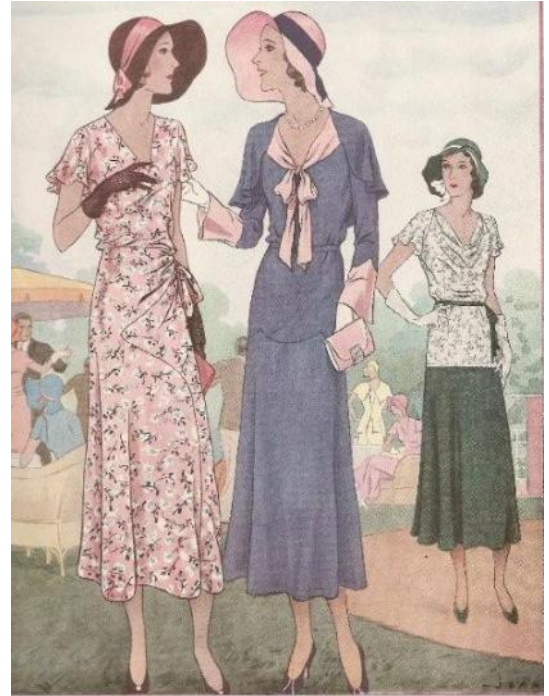
The Silhouette is Simplified

No. 6527 - A simple design ideally suited to the use of prints. The sleeves are in the capelet fashion and the shaped seaming of the draped skirt gives youthfully slender lines.

No. 6533 - Again the cape-fichu comes into play on a chic afternoon gown. The yoke effect on the skirt repeats the line of the capelet. In a smart new contrast combination.

No. 6535 - The light-bodice and dark-skirt combination is one of the newest ways of introducing contrast. Also new is the short raglan sleeve that flares in capelet manner.

Copied from the may 1931 issue of the McCall's Magazine.



6527

6533

6535

For Sale: Classified Ads From Regional Model A Club Newsletters

News 'A' Letter - Heart of America Model A Club - March 2009 - Kansas City, MO

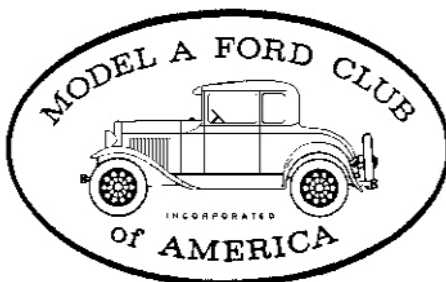
1930 Model A Ford Pickup with matching trailer. New pads on Hydraulic Brakes, 16 inch wheels. Driven weekly. Truck \$10,000; trailer \$1000. Gene Doerflinger

The Cowtown "A" - Fort Worth Model A Ford Club - March 2009 - Fort Worth, TX

1929 Model A Roadster Pickup older restoration, red body, black fenders, runs good, a fun vehicle. For more information contact Raymond Hatcher @

Central Iowa Model A Ford Club Newsletter - March 2009 - Ankeny, IA

1931 Tudor Model A. Good touring car. High compression head and overdrive. Good condition. Will negotiate \$13,500. Rick Meiners.



MAFCA
250 S. Cypress St.
La Habra, CA 90631 - 5515
U.S. Membership Cost: \$40

The Wichita A's Model A Ford Club encourages members to join both National MARC and MAFCA Clubs.



MARC
6721 Merriman
Garden City, MI 48315
U.S. Membership Cost: \$38

2008 - 2009 Swap Meet Schedule

April 30-May 3, 2009.....	37th Annual Pate Swap Meet, Texas Motor Speedway.....	Fort Worth, TX
	www.pateswapmeet.com	
May 1-3, 2009.....	Lawrence Swap meet, Douglas County 4-H Fairgrounds.....	Lawrence, KS
May 7-9, 2009.....	Chickasha Spring Swap Meet, Fairgrounds	Chickasha, OK
	www.chickashaautoswapmeet.com	
June 16-20, 2009.....	Petit Jean Show and Swap Meet, Petit Jean Mountain.....	Morrilton, AR
June 27-28, 2009.....	Swap Fremont - 24th Annual - Christensen Field	Fremont, NE
July 9-12, 2009.....	Iola Old Car Show & Swap Meet.....	Iola, WI
	www.iolaoldcarshow.com	
August 21-23, 2009.....	42nd Annual Ozark Swap Meet, Ozark Empire Fairgrounds.	Springfield, MO
	www.ozarksantiqueautoclub.com	
September 19-20, 2009.....	Ararat Shrine Swap Meet at Wolds of Fun.....	Kansas City, KS
	http://www.araratshrine.com/swap/	

2009 Parade & Car Shows

May 3, 2009.....	2009 Gamblers for Life - Proceeds to American Cancer Society	Precision Pattern Inc. 1643 S. Maize Road
October 10, 2009.....	Maize Fall Festival Parade and Car Show	Maize, KS
	www.maizelionsclub.com	

2008 - 2011 Future Regional & National Model A Meets

June 14-18, 2009.....	Model A Ford Club of CO Regional Meet.....	Breckenridge, CO
June 22-26, 2009.....	MARC National Meet - Henry's A's Region.....	Merrillville, IN
December 3-6, 2009.....	MAFCA Annual Membership Meeting.....	Waukesha, WI
August 2-6, 2010.....	MAFCA International Meet.....	Vancouver, British Columbia,
December 8-11, 2010.....	MAFCA Annual Membership Meeting.....	Colorado Springs, CO
2010.....	MARC Membership Meet - Sycamore A Region.....	Terre Haute, IN
2010.....	Meadowlark A's Regional Meet.....	Omaha, NE
2011.....	Plain Ol' A's Regional Meet.....	Kansas City, KS

Tri County Insurance, Inc.
K. Verdou Parish
 Representing J.C. Taylor for Antique Auto Insurance
 407 N. Merchants St., P.O. Box 670
 Belle Plaine, KS 67013
 1-800-488-2408 Fax: 620-488-3834
 Tricoag@atd.com
 "Serving Our Customers Since 1973"

B & B Electric Motor Co.
 Your One Stop Industrial Service Center
 New • Repair • Rewind
 Electric Motors • Pumps
 Phone (316) 267-1238 • 1-800 499-1238
 Fax (316) 267-0599 • Emergency (316) 641-0806
 email: bbemc@msn.com • bbelectricmotor.com
 332 Lulu Ed Giesen
 Wichita, KS 67211 Customer Service

Darrell's Tile
 1225 E. Pawnee Wichita, KS 67211
 (316) 265-8392
STAN LUDLOW
 Marble, Granite, Limestone
 Ceramic Tile, Mexican Tile
 Professional Installation Since 1980
 Come See Our Showroom

JEFF DEWEY
 ATTORNEY AT LAW

1020 N. MAIN, SUITE A DEWEY & LUND, L.L.P.
 P.O. BOX 635 316-265-6600
 WICHITA, KS 67201 FAX 316-265-0088
 jdewey@deweylund.com TOLL FREE 800-680-6614

W
WALLACE W. WADE
 SPECIALTY TIRES
 530 Regal Row
 Dallas, Texas 75247
 (214) 688-0091
 Fax (214) 634-8465
 1-800-666-TYRE
 www.wallacewade.com
 wallacewade@earthlink.net
WALLACE W. WADE
 1 800 666 TYRE
 VINTAGE TIRES
 ANTIQUE & CLASSIC
 CARS - TRUCKS
 MILITARY - TRACTORS
 SPECIALTY TIRE DISTRIBUTOR
 "IF WE DON'T HAVE IT — WE'LL GET IT"



www.amfam.com

PAMELA KIRK AGENCY

9505 WEST CENTRAL SUITE 102
 WICHITA, KS 67212



OFFICE: 316-729-9797
 FAX: 316-729-9898

The Model "A" Medic

Specializing in ALL Your Parts, Service & Restoration Needs for your Model "A" Ford

Eric Weninger Hm: (316) 685-2553
 2045 S Bedford Rd Cell: (316) 619-1821
 Wichita, KS 67207 email: eweninger@sbcglobal.net

Everything from tune-ups to ground up restorations

SUNFLOWER SWAP MEET
KANSAS COLISEUM
WICHITA, KS
FEBRUARY 5-6, 2010

Clarence Howland

1911 Briarcliff
 Emporia, Kansas 66801

BUY - SELL - TRADE
 Antique Cars and Parts

Cell: (620) 341-3533
 Home: (620) 342-0215



Jim's Model "A"
Starter & Generator Repair

Specializing in 12 Volt Starters
 3456 Bonn, Wichita, KS 67217
 (316) 943-7033



Speedometer Repair

www.cushmanspeedometer.com
 info@cushmanspeedometer.com

5704 N. Athenian Ave.
 Wichita, KS 67204
 (316) 648-2444
 (316) 832-9090

Powder Coating Services

A Division Of

LORAC COMPANY

"FOR A DURABLE OVEN-CURED FINISH"

Motorcycle & Auto • Lawn Furniture • Hobbyist
 Manufacturers • Aviation • Agriculture • Many Others

Sandblasting Facilities

316-263-2565 • 800-554-0144 • Fax 316-263-5181
 MITCH HERRING 624 E. Harry
 COATINGS MANAGER Wichita, KS 67211-4205

FBS
FARM BUREAU FINANCIAL SERVICES
 Insurance • Investments

James M. Sharp
 Agent

316.788.5257
 316.788.1836 fax
 James.Sharp@fbfs.com
 1721 East Osage, Ste. 100
 Derby, KS 67037

Registered Representative/Securities & services offered through EquiTrust Marketing Services, LLC,*
 5400 University Avenue, West Des Moines, IA 50266, 877280.2904, Member SIPC.
 Farm Bureau Life Insurance Company* | Farm Bureau Mutual Insurance Company*
 Western Agricultural Insurance Company* | *Affiliated, and companies of Farm Bureau Financial Services

PREFERRED HEARING AID CENTERS OF KANSAS

9415 E. Harry
 Suite 206
 Wichita, KS 67207

Phone: 316-618-1424

Email: Preferredhear@sbcglobal.net



Al Wilson

Hearing Instrument Specialist

SELECT-A-CAR

Donn Mason

Owner

Sales Representative

Dealer Sales
 300 S. Winfield
 Rock, KS 67151

Phone: 316-393-3269

Fax: 316-722-6238

Email: dpmason@selectacar.com



RAY HARSHFIELD
 Realtor Associate

Phone: (316) 942-1925
 Fax: (316) 943-1311
 Res.: (316) 262-2958



3535 W. 13th
 Wichita, KS 67203

Andover Ace Hardware

630 N. Andover Rd. • P.O. Box 107
 Andover, KS 67002
 Phone: 316-733-0023 FAX: 316-733-2374
 Email: a04487a@acehardware.com
 Website: www.acehardware.com



Marc Wendt
Karolyn Wendt
Erich Wendt

HAYSVILLE
SANDBLASTING

2075 Emmett Haysville, KS 67060

FULL SERVICE SANDBLASTING

In Shop Phone: 522-6793 Commercial
 Portable Residential

Wichita A's Model A Ford Club
P.O. Box 25
Wichita, KS 67201



PRSR STD
US POSTAGE PAID
WICHITA KS
PERMIT NO. 169

Address Service Requested

Wichita A's Model A Ford Club Contacts

President, Ed Giesen

president@wichitaas.com

Vice President, Jim Broadhead

vicepresident@wichitaas.com

Secretary, Lenette Kottas

secretary@wichitaas.com

Treasurer, Jim Clark

treasurer@wichitaas.com

Tour Chairman, Dennis Ellerman

tourchair@wichitaas.com

Swap Meet Chairman, Frank Chenoweth

swapchair@wichitaas.com

Swap Meet Secretary, John Stone

swapmeet@wichitaas.com

Newsletter Editor, Linda Kibbe

editor@wichitaas.com

Webmaster, Debbie Harvey

webmaster@wichitaas.com

The Rumbleseat Review is the official publication of the Wichita A's Model A Ford Club, Inc, a local chapter of the Model A Ford Club of America and the Model A Restorers Club. It's purpose is to keep members informed of past, present and future events, activities, and club news. In addition, this newsletter includes articles and other information to aid in the restoration and enjoyment of the Model A Ford automobile.

This publication is mailed to members, prospective members and editors of similar publications prior to monthly meetings. Meetings are usually the fourth Monday of the month. Members may publish antique car related ads only for free of charge which includes items wanted, items for sale, or items for trade. We invite members to submit articles containing technical Model A information and other interesting tidbits for publication in this newsletter. Items to be published must be submitted to the newsletter editor by deadline shown in the calendar. Wichita A's membership dues are \$25.00 (new members) and \$20.00 (renewals), per year (October to September30). MAFCA dues are \$40.00 per year and MARC dues are \$38.00 per year. An advertisement in this newsletter is \$15.00 per year.